

**AB 617 Community Air Protection Program**  
**North-End Community: Brawley-Westmorland-Calipatria**  
**Steering Committee Meeting Agenda**  
**Virtual Meeting via Zoom**  
**(Being Held in ICAPCD Office at 150 S 9<sup>th</sup> St, El Centro CA 92243)**

**MEETING AGENDA**  
**Monday, April 8, 2024**  
**5:30 p.m. – 7:30 p.m.**

**Facilitator: Imperial County Air Pollution Control District**

*Members of the public may connect to this meeting on Zoom from a PC, Mac, iPad, iPhone, or Android device by clicking the following link to join:*

[https://us06web.zoom.us/j/84815587566?pwd=mxPB8IPeAne4pISIMt60lthXXT52yA.M1AW\\_p6Z6\\_GBEVZa](https://us06web.zoom.us/j/84815587566?pwd=mxPB8IPeAne4pISIMt60lthXXT52yA.M1AW_p6Z6_GBEVZa)

**WEBINAR ID: 848 1558 7566**

**Passcode: 655225**

*To join by telephone, please dial: +1-253-205-0468 and enter the Webinar ID: 848 1558 7566 and Passcode: 655225.*

**WELCOME**

- |  |                |
|--|----------------|
| <b>1. ROLL CALL/OPENING REMARKS BY CSC MEMBERS</b>   | <b>ICAPCD</b>  |
| <b>2. PUBLIC COMMENT PERIOD</b><br>Comments are to be limited to no more than 3 minutes per person.  | <b>ICAPCD</b>  |
| <b>3. ACTION ITEMS:</b><br><br><b>A. North Imperial Phase 1 Community Boundaries Discussion and Selection</b><br>Presentation of the proposed boundaries for the North Imperial Phase 1 AB 617 Community. Discussion will be held regarding each proposed set of boundaries, with the CSC voting on the boundaries to implement.<br><i>(Attachment: <a href="#">AB 617 North Imperial Phase 1 Community Boundaries Presentation</a>)</i> | <b>Ramboll</b> |
| <b>4. DISCUSSION/INFORMATION ITEMS</b><br><b>A. Imperial County AB 617 North-End Corridor Open Discussion</b><br>Open discussion regarding the Imperial County AB 617 North-End Corridor.  | <b>ICAPCD</b>  |
| <b>5. AGENCY UPDATES</b>   | <b>ICAPCD</b>  |
| <b>6. AGENDA TOPICS FOR NEXT MEETING</b><br>Discuss the next CSC meeting for April 15, 2024.   | <b>ICAPCD</b>  |
| <b>7. CLOSING REMARKS/AJOURNMENT</b>   | <b>ICAPCD</b>  |

**AB 617 Programa de Protección del Aire Comunitario  
Comunidad North-End: Brawley-Westmorland-Calipatria  
Agenda De La Reunión Del Comité Directivo**

**Virtual Meeting via Zoom**

**(Being Held in ICAPCD Office at 150 S 9<sup>th</sup> St, El Centro CA 92243)**

**AGENDA DE LA REUNIÓN**

**Lunes, 8 de Abril, 2024**

**5:30 p.m. – 7:30 p.m.**

**Facilitador: Imperial County Air Pollution Control District**

*Los miembros del público pueden conectarse a esta reunión en Zoom desde una PC, Mac, iPad, iPhone o dispositivo Android haciendo clic en el siguiente enlace para unirse:*

[https://us06web.zoom.us/j/84815587566?pwd=mxPB8IPeAne4pISIMt60IthXXT52yA.M1AW\\_p6Z6\\_GBEVZa](https://us06web.zoom.us/j/84815587566?pwd=mxPB8IPeAne4pISIMt60IthXXT52yA.M1AW_p6Z6_GBEVZa)

**ID de la reunión: 848 1558 7566**

**Código de acceso: 655225**

*Para unirse por teléfono, marque: +1-253-205-0468 e ingrese ID de la reunión: 848 1558 7566 y el código de acceso: 655225.*

**BIENVENIDO**

- 1. PASO DE LISTA / PALABRAS DE APERTURA DE LOS MIEMBROS DEL CSC** **ICAPCD**
- 2. PERIODO DE COMENTARIOS PÚBLICOS** **ICAPCD**  
Los comentarios deben limitarse a no más de 3 minutos por persona.
- 3. ARTÍCULOS DE ACCIÓN:**
  - A. Discusión y selección de los límites de la comunidad de la Fase 1 de North Imperial** **Ramboll**  
Presentación de los límites propuestos para la Comunidad AB 617 de la Fase 1 de North Imperial. Se llevará a cabo una discusión sobre cada conjunto de límites propuesto, y el CSC votará sobre los límites a implementar.  
*(Adjunto: [Presentación de los límites comunitarios de la Fase 1 de AB 617 North Imperial](#))*
- 4. ARTÍCULOS DE DISCUSIÓN/INFORMACIÓN**
  - A. Discusión abierta sobre el corredor extremo norte AB 617 del condado de Imperial** **ICAPCD**  
Discusión abierta sobre el corredor extremo norte AB 617 del condado de Imperial.
- 5. ACTUALIZACIONES DE LA AGENCIA** **ICAPCD**
- 6. TEMAS DEL AGENDA PARA LA PRÓXIMA REUNIÓN** **ICAPCD**  
Discutir la próxima reunión del CSC para el 15 de abril de 2024.
- 7. OBSERVACIONES DE CLAUSURA/CIERRE DE CLAUSURA** **ICAPCD**

### **3. Action Items:**

#### **A. North Imperial Phase 1 Community Boundaries Discussion and Selection (Ramboll)**



**RAMBOLL**

Bright ideas.  
Sustainable change.

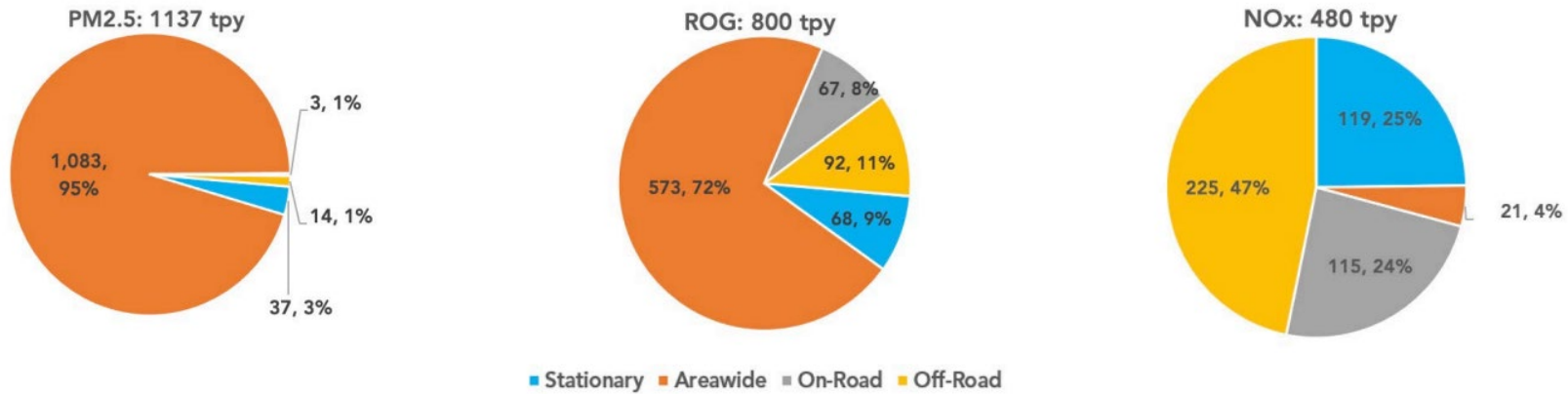
# Selecting Community Boundaries

*April 8, 2024*

**North End Phase 1 Community:**  
Westmorland, Brawley, Calipatria

# What are the key emission sources in the North End?\*

Emission Sources  
Boundary Alternatives  
Next Steps



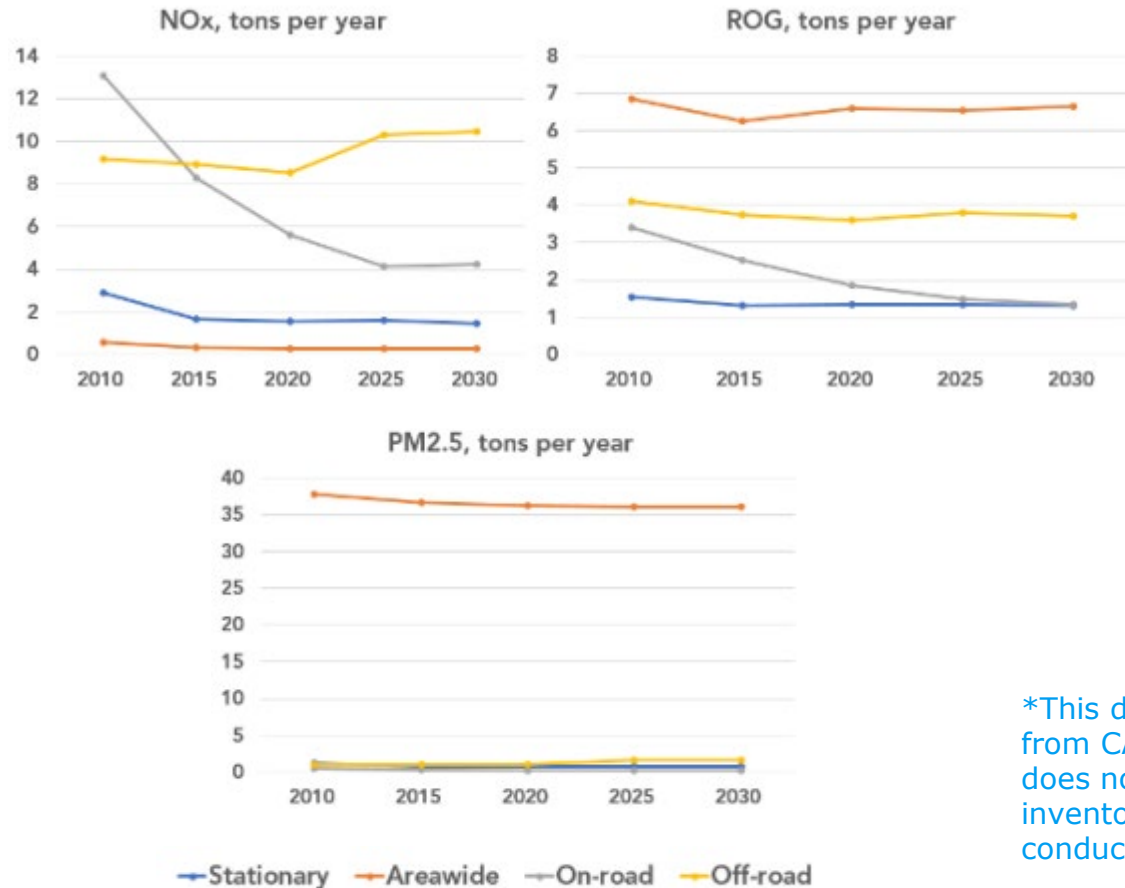
## Areawide Sources<sup>43</sup>

PM <sub>2.5</sub>	Percent	ROG	Percent
Fugitive Windblown Dust	69%	Farming Operations	46%
Farming Operations	12%	Pesticides/Fertilizers	25%
Unpaved Road Dust	11%	Consumer Products	15%
Managed Burning and Disposal	4%	Architectural Coatings and Related Process Solvents	6%
Paved Road Dust	2%	Managed Burning and Disposal	5%

\*This data is **preliminary** and is from CARB's 2023 Staff Report. It does not represent the emissions inventory development that will be conducted as part of the CERP.

CARB. Fifth Annual Community Air Protection Program Recommendations Staff Report. Available at: <https://ww2.arb.ca.gov/sites/default/files/2023-01/23%2001%2019%20Fifth%20Annual%20CAPP%20RECs%20Staff%20Report.pdf>.

# What are the pollutant trends in the community?



\*This data is **preliminary** and is from CARB's 2023 Staff Report. It does not represent the emissions inventory development that will be conducted as part of the CERP.

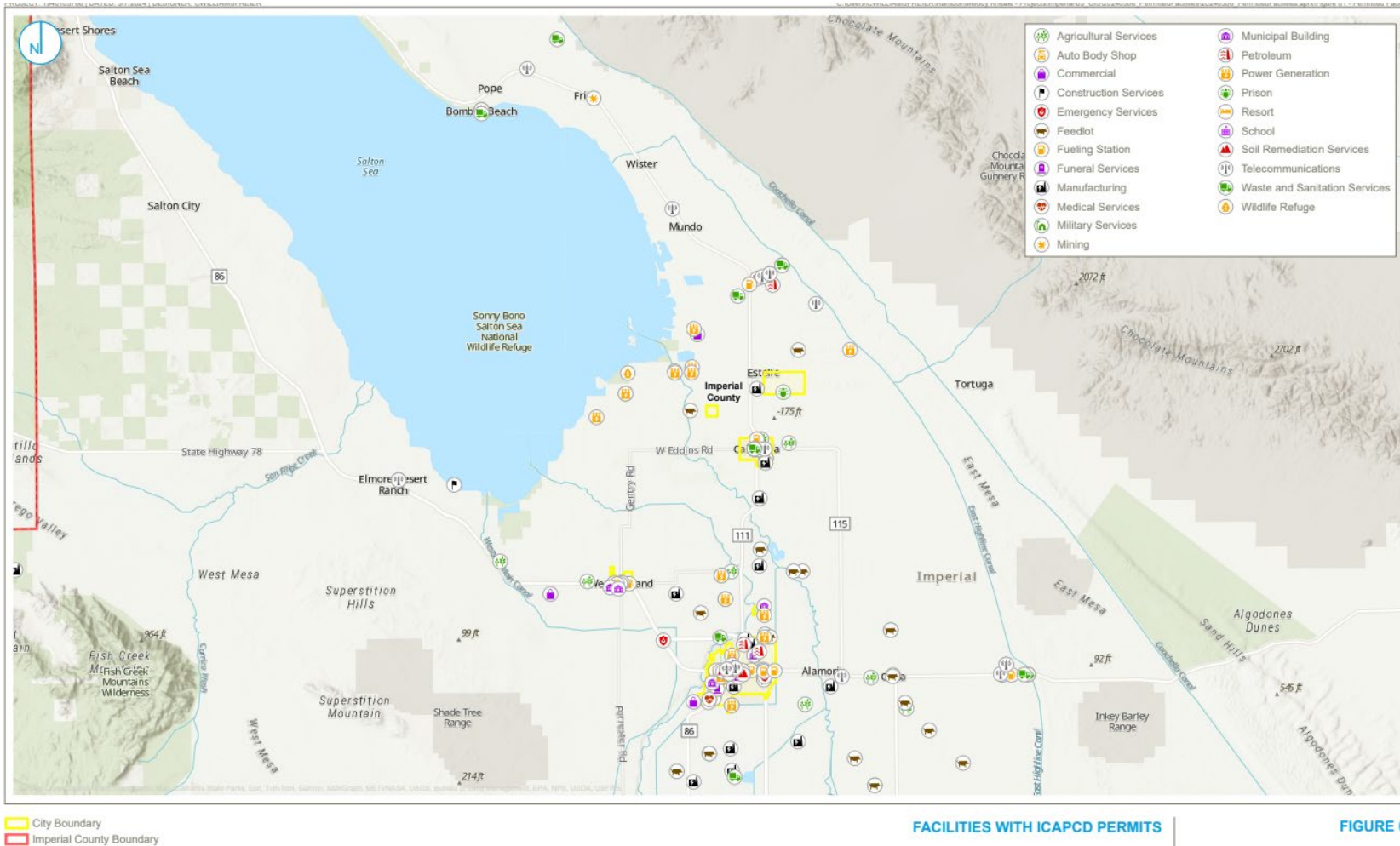
## Emission Sources

Boundary Alternatives

Next Steps

# Where are emission sources present in the community?

## Emission Sources Boundary Alternatives Next Steps

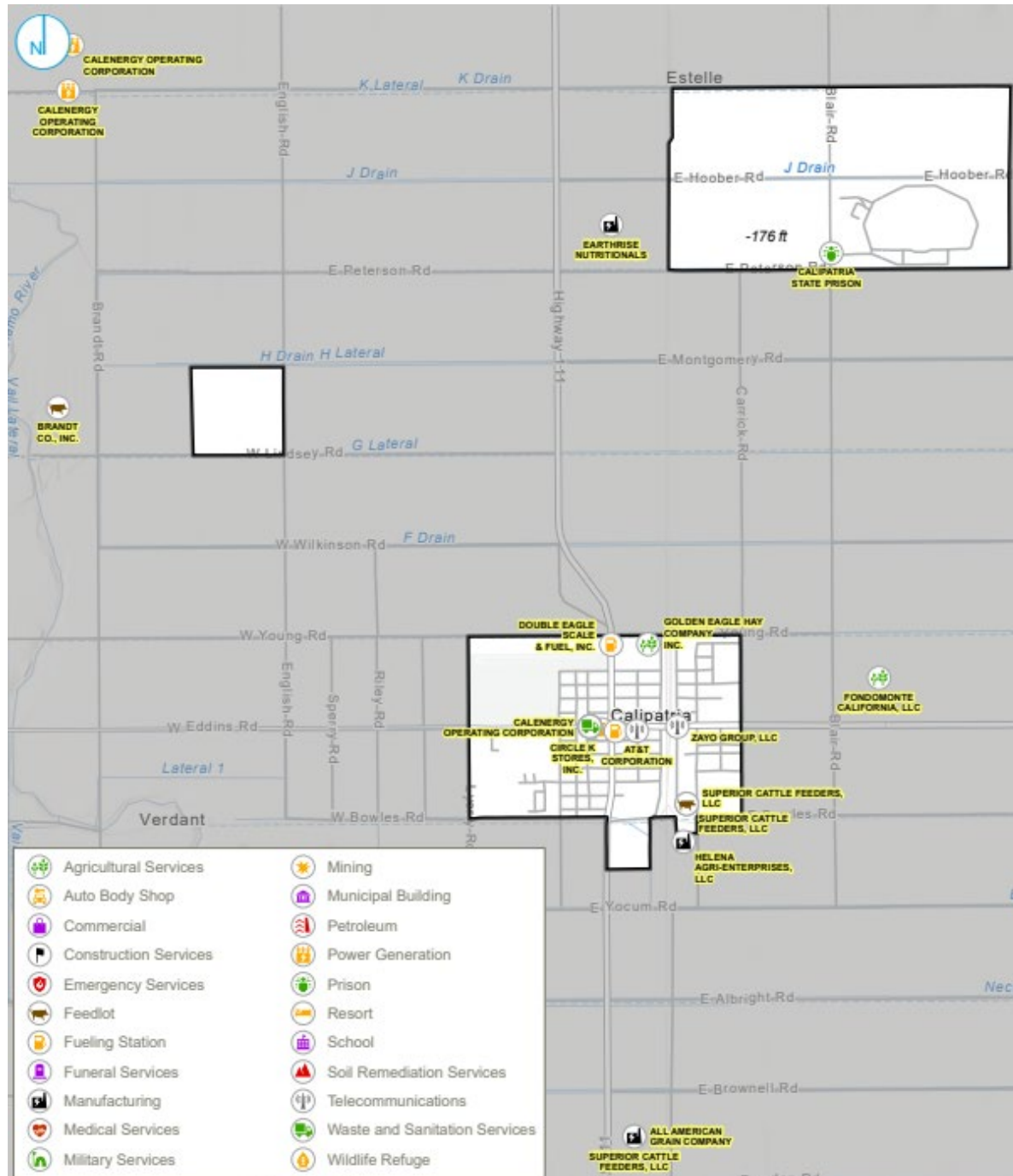


Data From: Imperial County APCD Permit Database.

FACILITIES WITH ICAPCD PERMITS

FIGURE 01

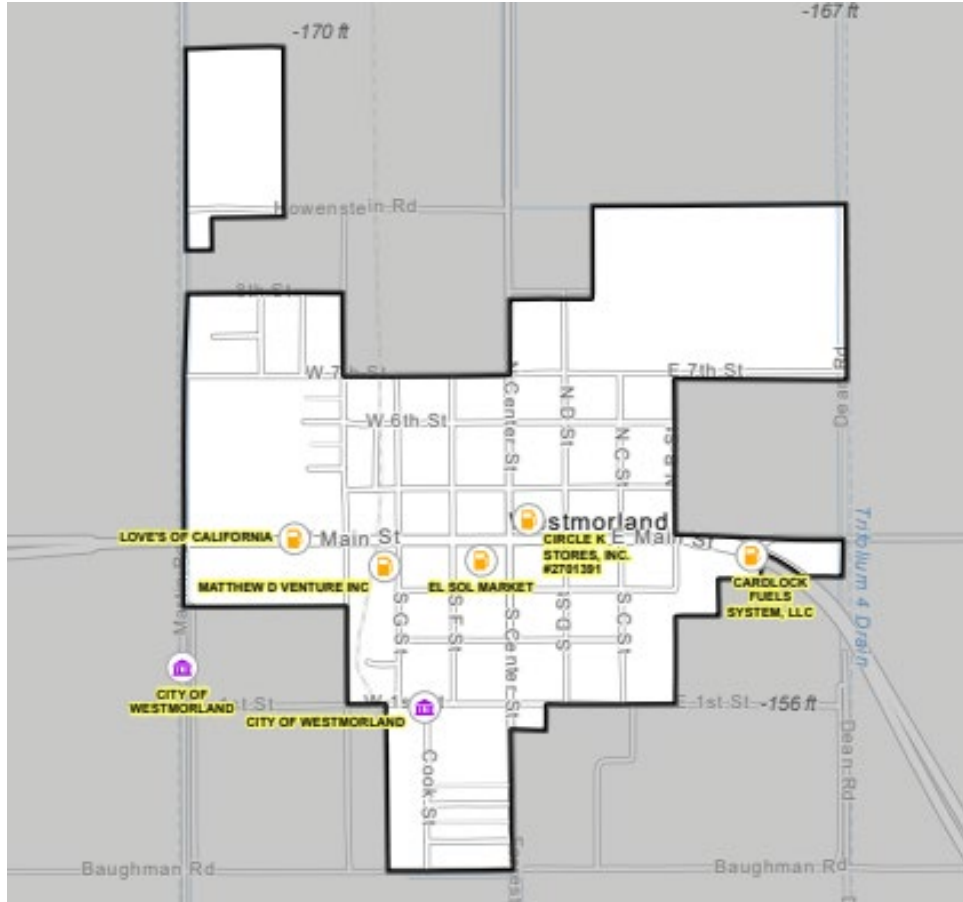
# Calipatria



**Emission Sources**  
Boundary Alternatives  
Next Steps



# Westmorland



- Agricultural Services
- Auto Body Shop
- Commercial
- Construction Services
- Emergency Services
- Feedlot
- Fueling Station
- Funeral Services
- Manufacturing
- Medical Services
- Military Services
- Mining
- Municipal Building
- Petroleum
- Power Generation
- Prison
- Resort
- School
- Soil Remediation Services
- Telecommunications
- Waste and Sanitation Services
- Wildlife Refuge

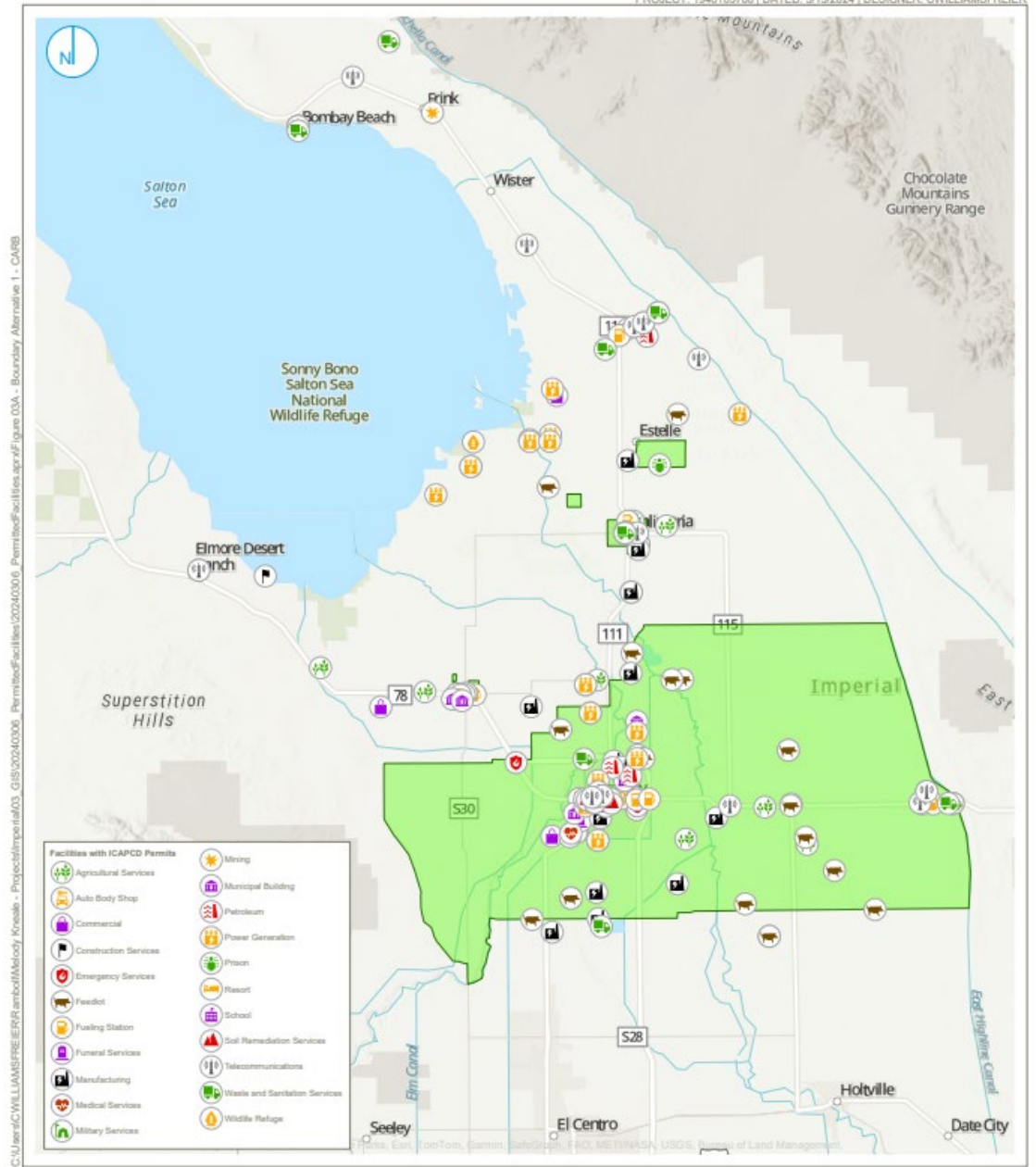
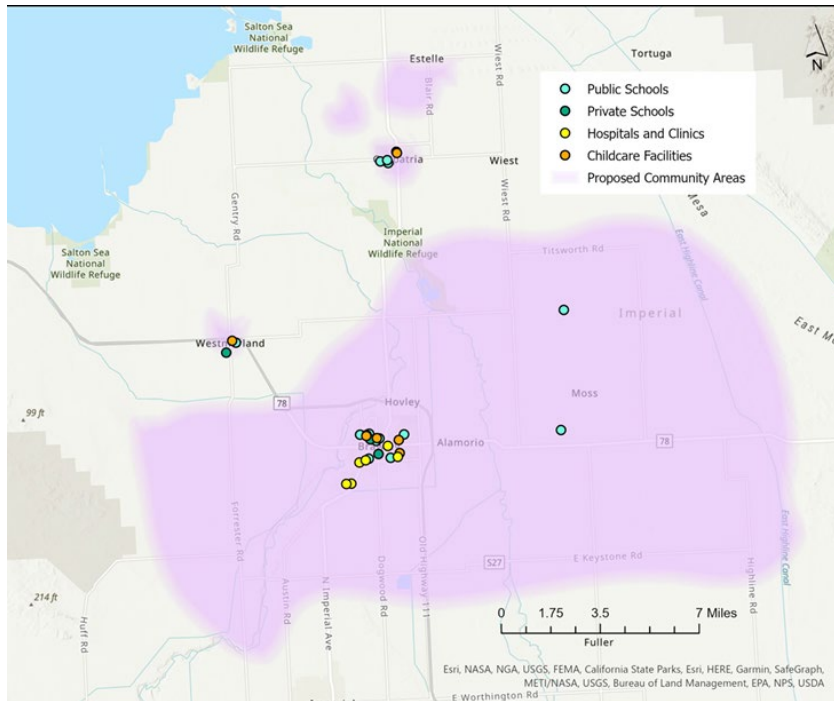
## Emission Sources

Boundary Alternatives

Next Steps



# Alternative 1: Boundaries from CARB Staff Report

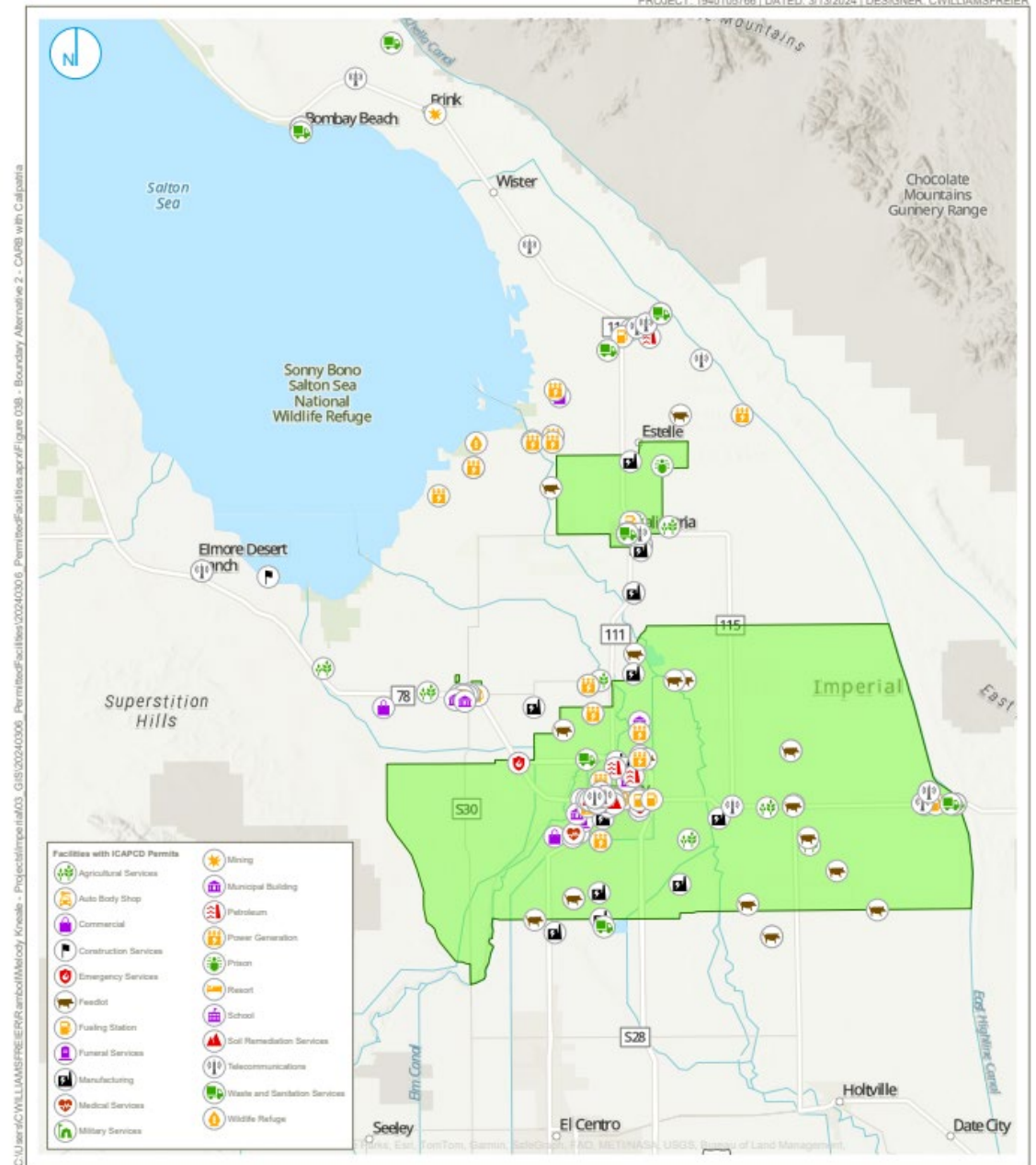
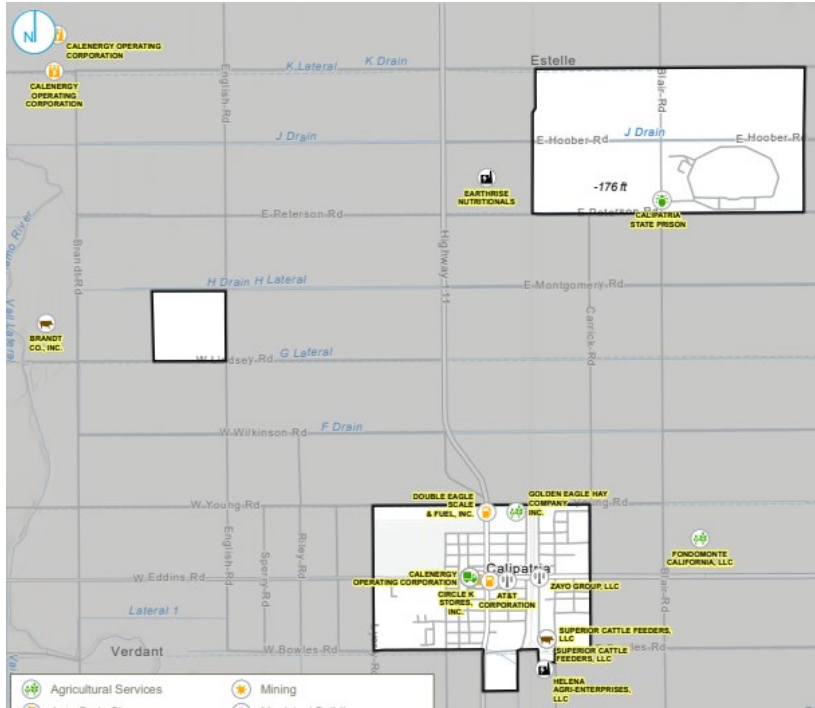


C:\User\CWILLIAMS\EPRE\ER\ambar\Melody\_Kneale - Project\Imperial\03\_GIS\2024\0308\_PermitFacilities.aprx\Figure 03A - Boundary Alternative 1 - CARB

**BOUNDARY ALTERNATIVE 1 FOR NORTH END COMMUNITY CARB BOUNDARIES**

**FIGURE 03A**

# Alternative 2: CARB Boundaries with Larger Calipatria Area

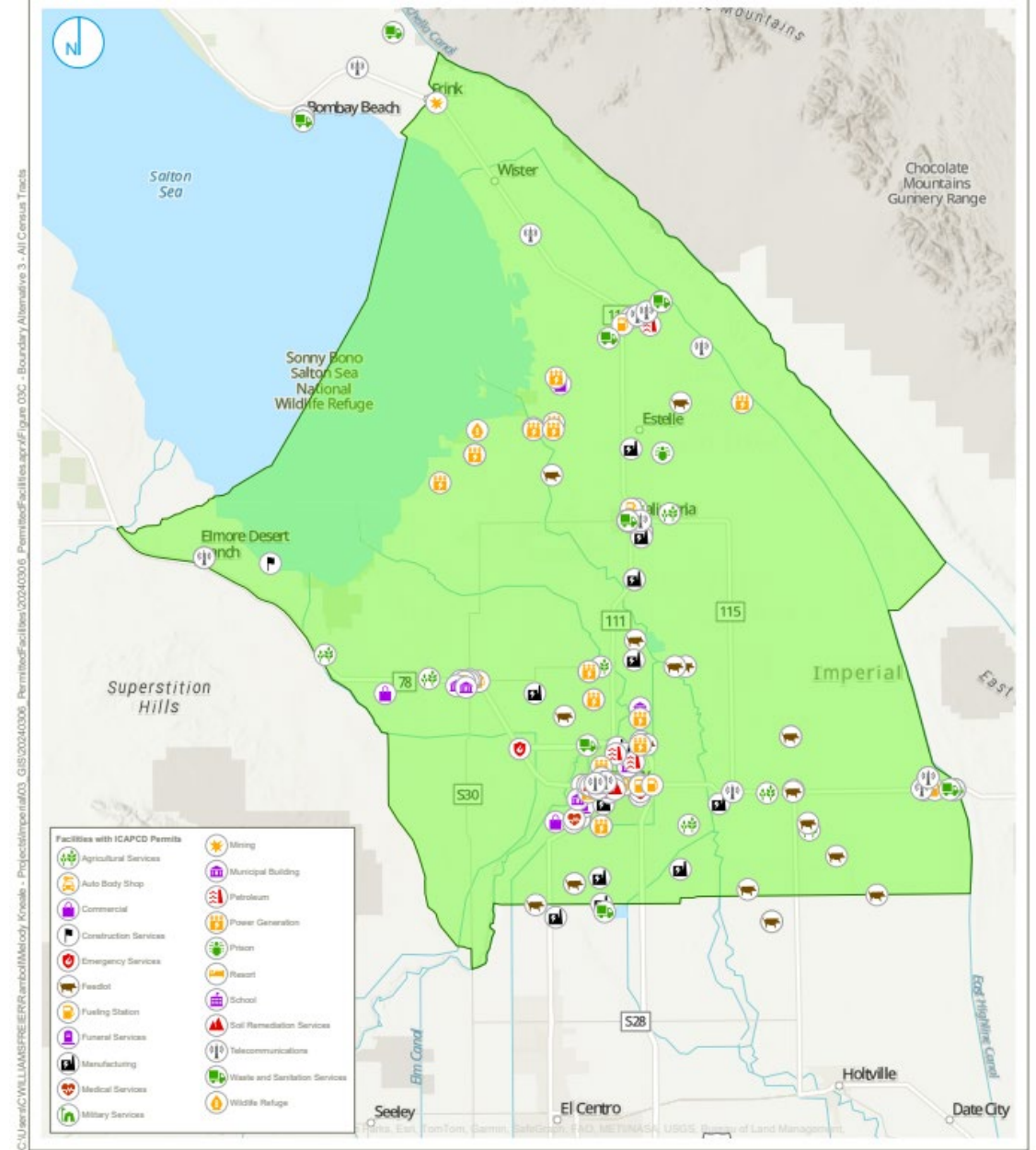
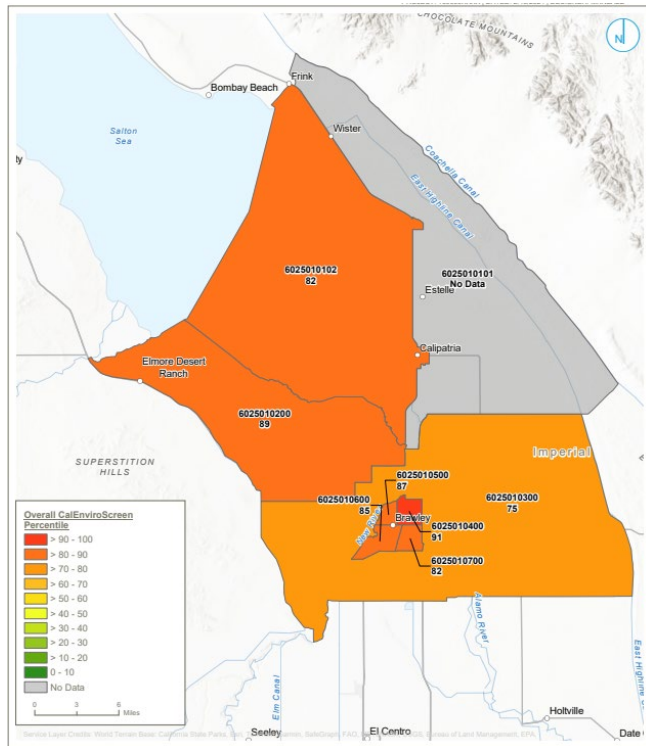


**BOUNDARY ALTERNATIVE 2 FOR NORTH END COMMUNITY CARB BOUNDARIES WITH CONNECTED CALIPATRIA SEGMENTS**

**FIGURE 03B**

RAMBOLL AMERICAS ENGINEERING SOLUTIONS, INC. A RAMBOLL COMPANY

# Alternative 3: Boundaries with All Nearby Census Tracts

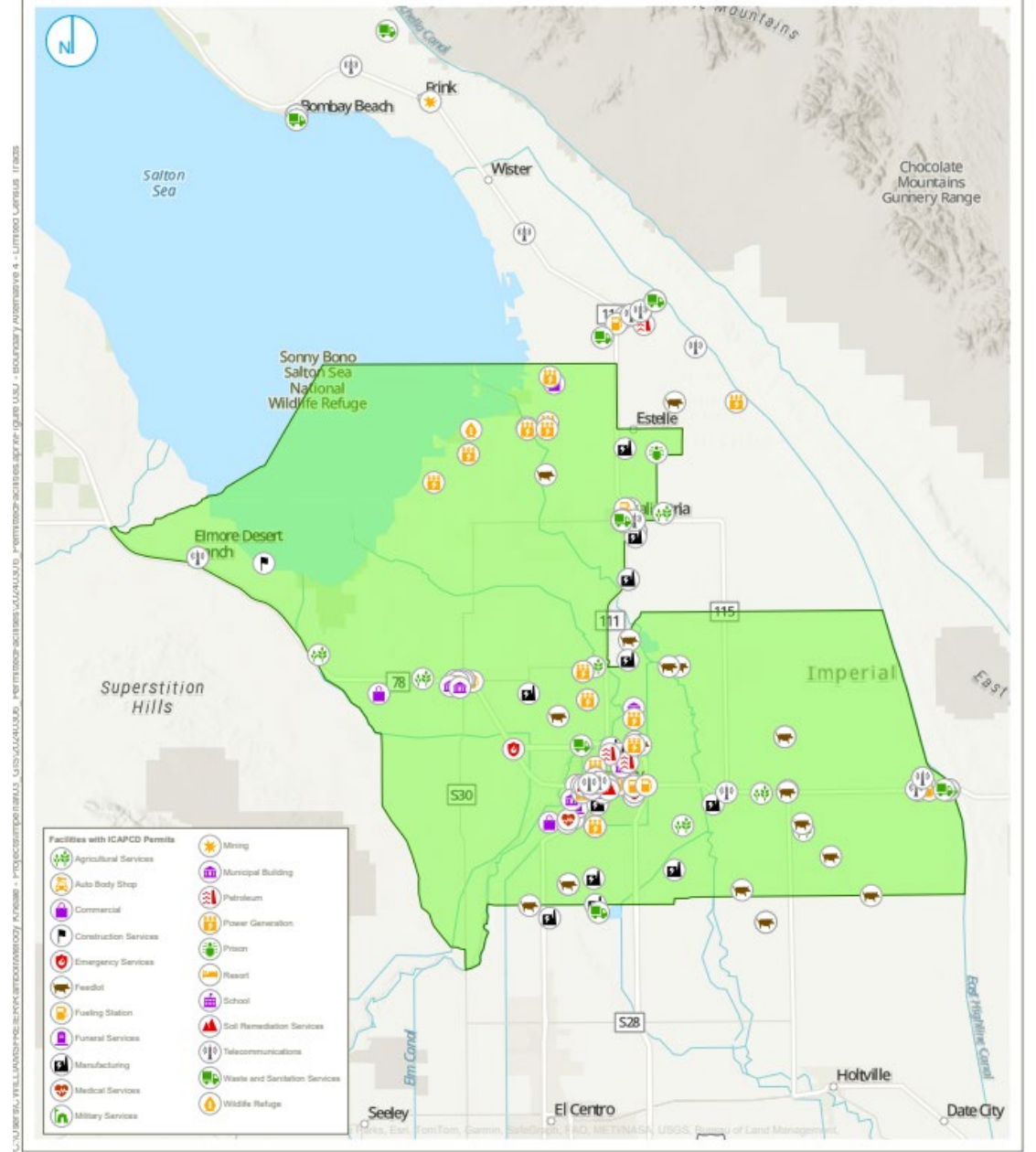
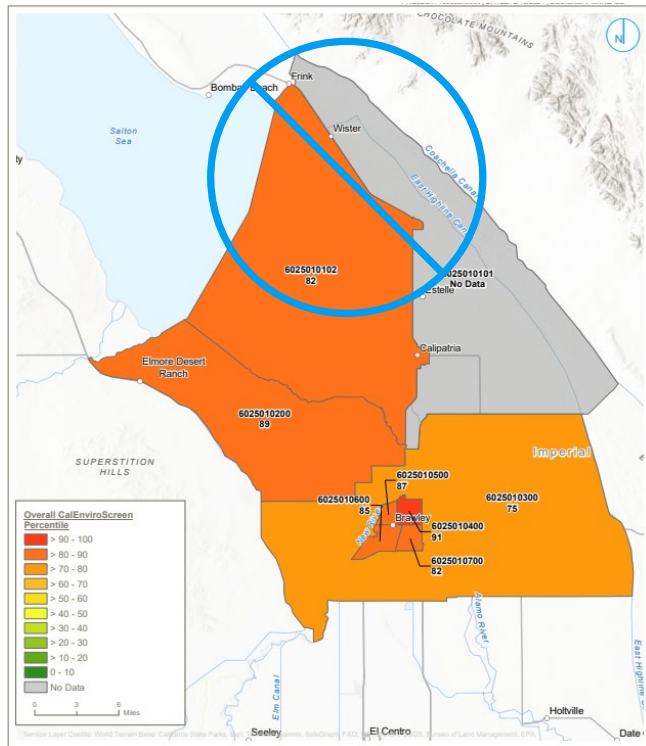


Boundary Alternative 3 (All Census Tracts)

**BOUNDARY ALTERNATIVE 3 FOR NORTH END COMMUNITY ALL CENSUS TRACTS**

**FIGURE 03C**

# Alternative 4: Boundaries with Limited Nearby Census Tracts

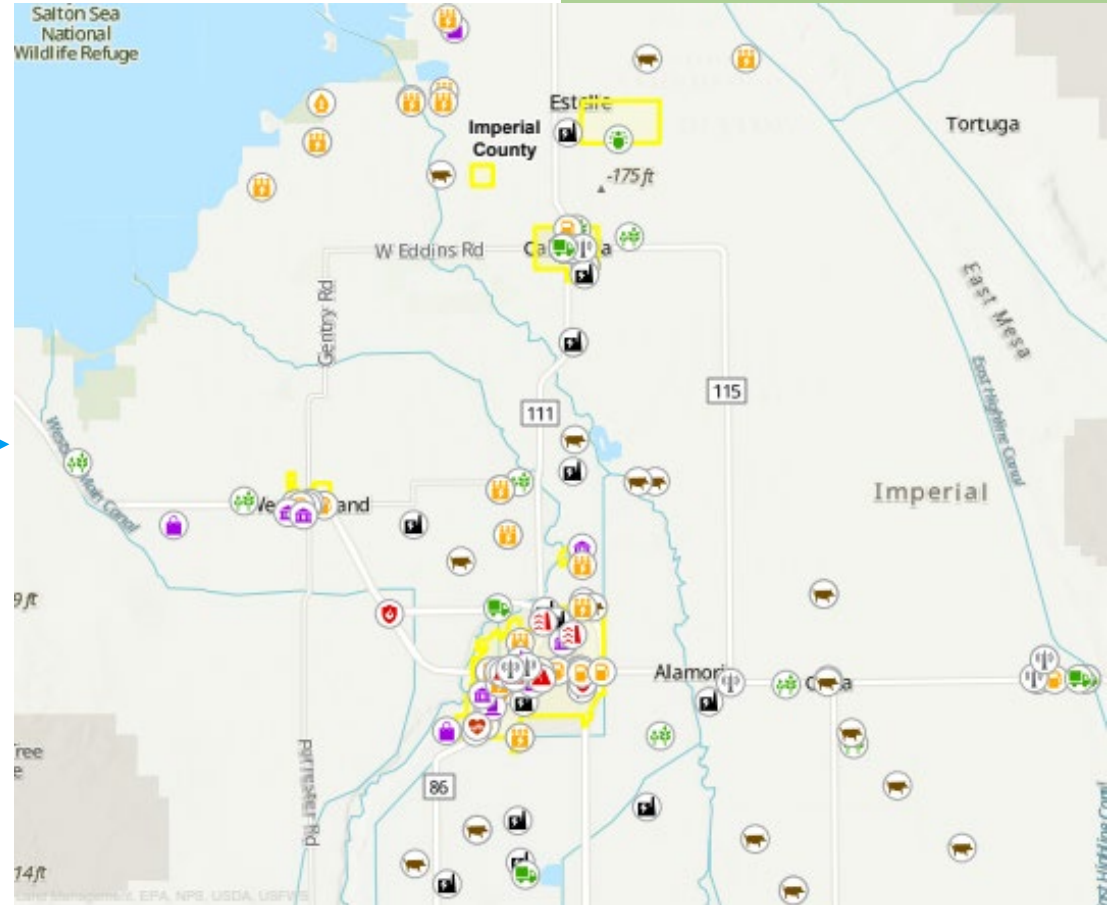
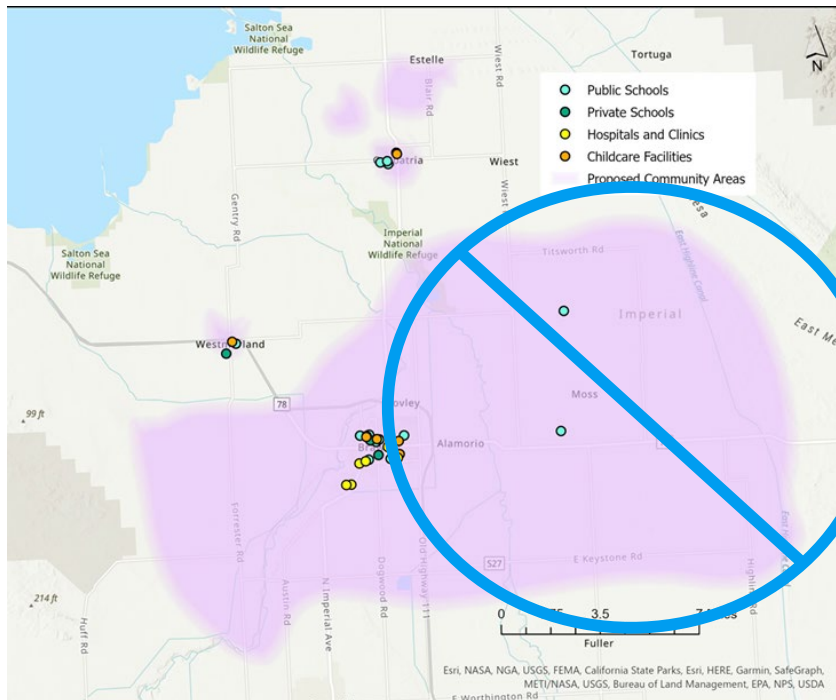


**BOUNDARY ALTERNATIVE 4 FOR NORTH END COMMUNITY LIMITED CENSUS TRACTS**

**FIGURE 03D**

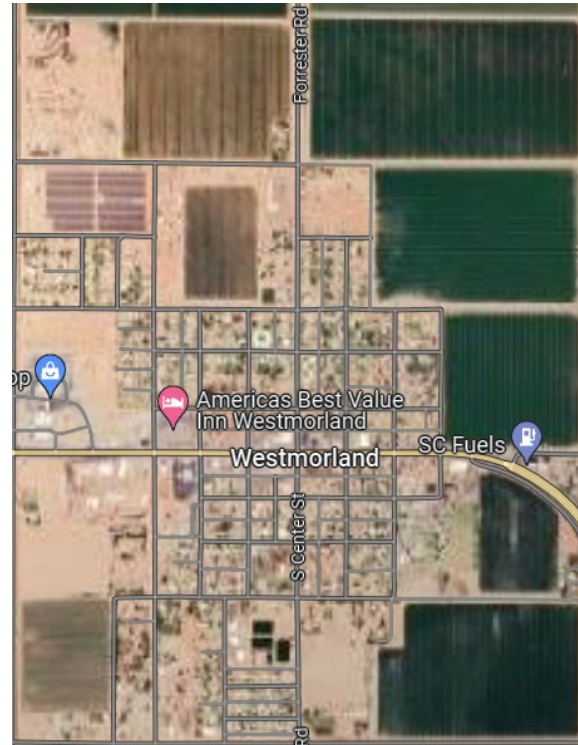
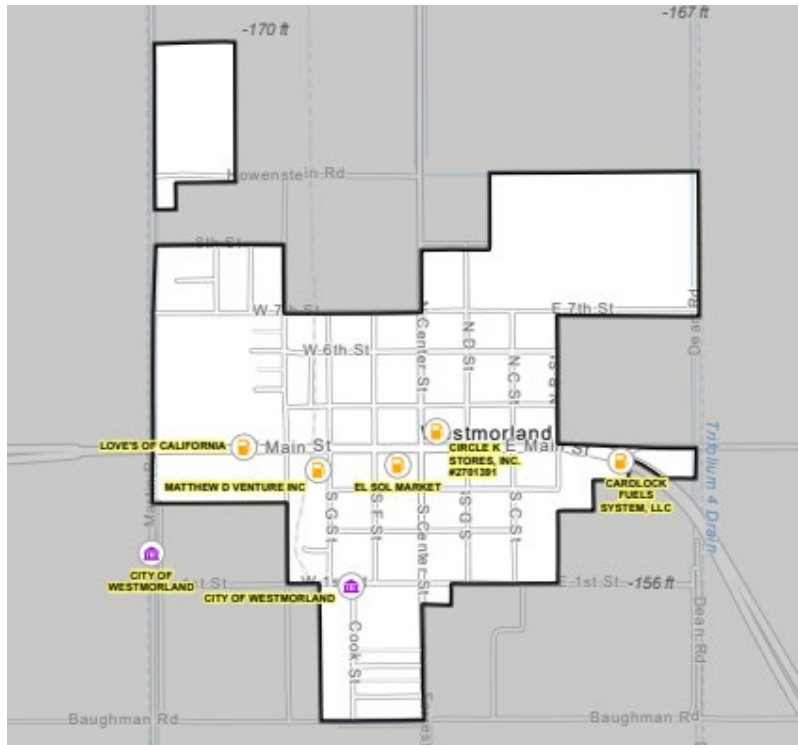
# Potential Refinement 1: Reducing Brawley

Emission Sources  
**Boundary Alternatives**  
Next Steps



# Potential Refinement 2: Expanding Westmorland

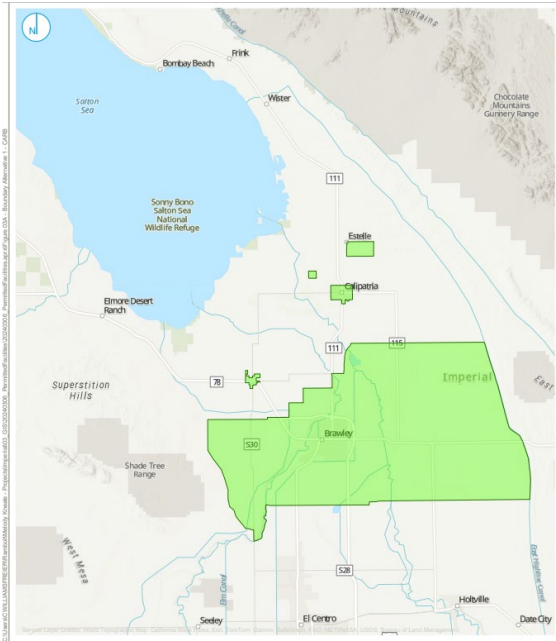
Emission Sources  
**Boundary Alternatives**  
Next Steps



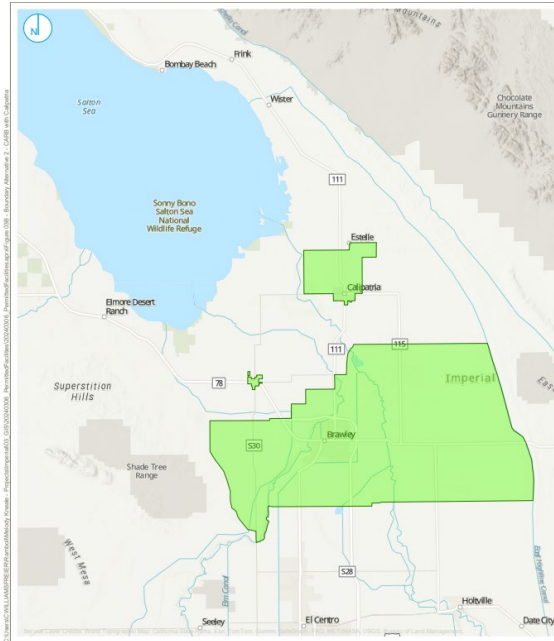


# Summary of Alternatives and Refinements

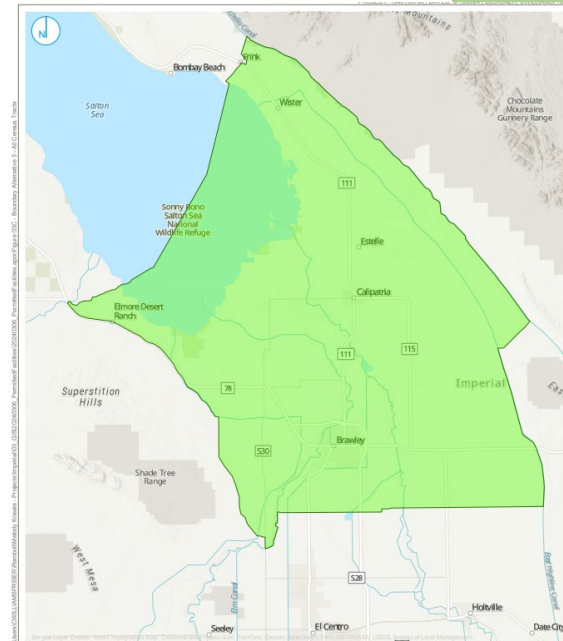
Emission Sources  
**Boundary Alternatives**  
Next Steps



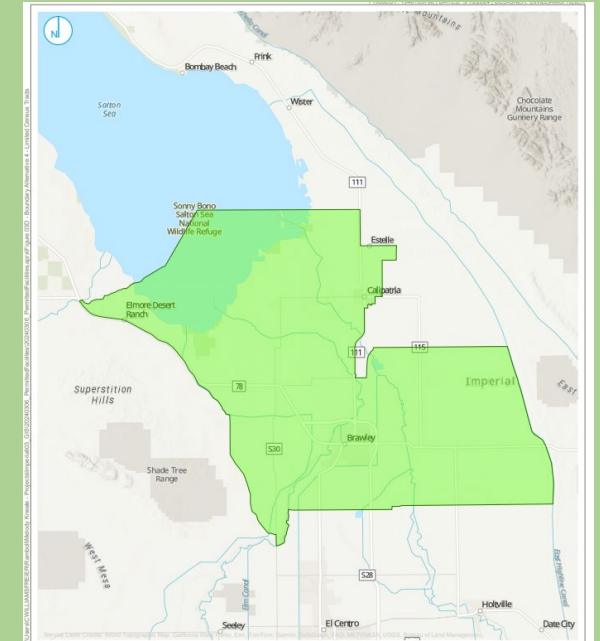
ALT 1: CARB Boundaries



ALT 2: CARB Boundaries with Expanded Calipatria



ALT 3: All Nearby Census Tracts



ALT 4: Limited Nearby Census Tracts

Potential Refinement 1: Expand Westmorland outside city boundaries

Potential Refinement 2: Reduce Brawley from census tract to city boundaries

# What are the next steps?

1. CSC to discuss and vote on final community boundaries
2. CARB to complete community level emissions inventory based on community boundaries
3. Open discussion on potential emission reduction strategies

Emission Sources

Boundary Alternatives

**Next Steps**

# Questions?

## **M. Scott Weaver**

Principal at Ramboll  
(213) 943-6360  
[msweaver@ramboll.com](mailto:msweaver@ramboll.com)

## **Emily Weissinger**

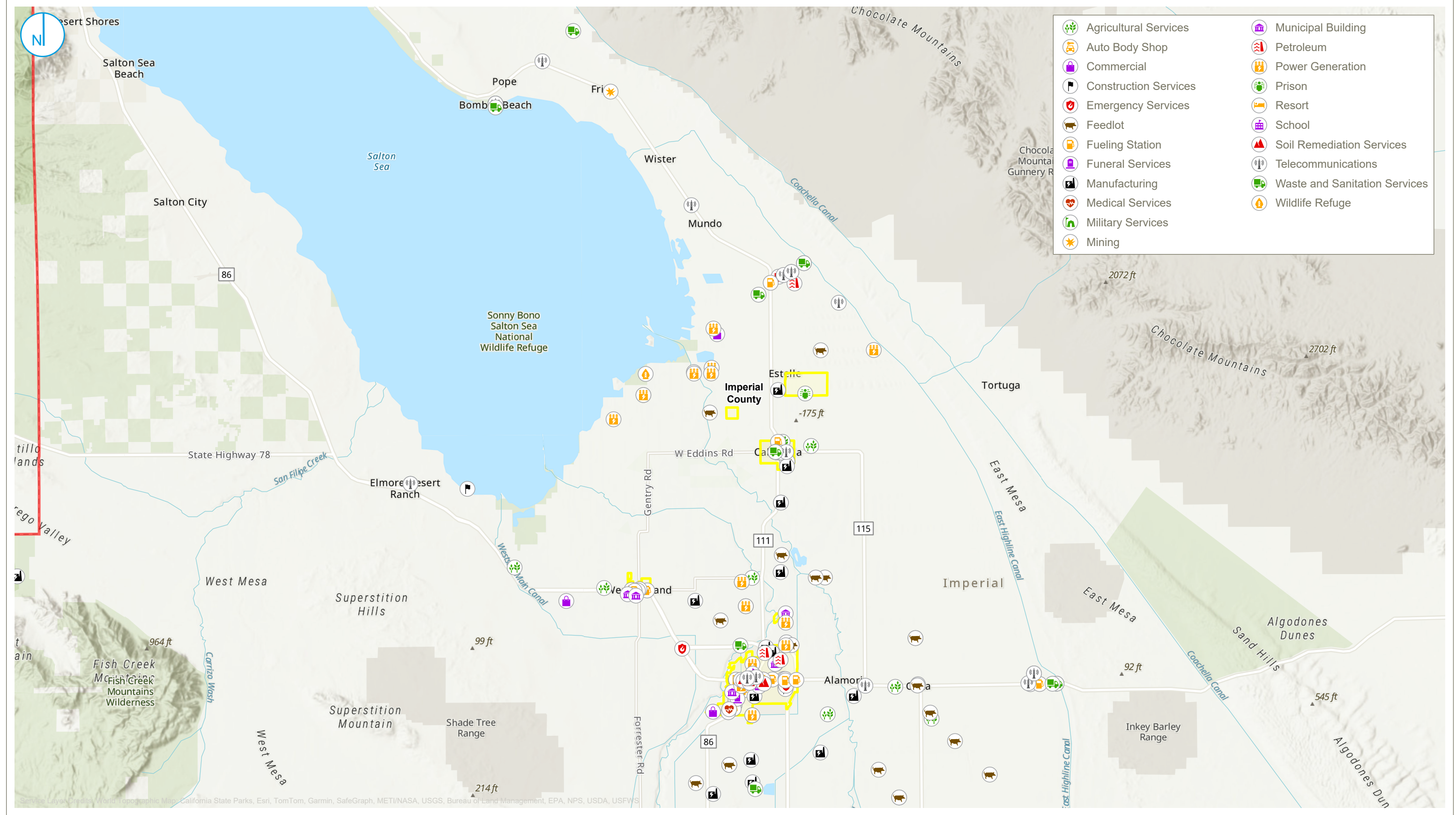
Senior Managing Consultant at Ramboll  
(602) 734-7739  
[eweissinger@ramboll.com](mailto:eweissinger@ramboll.com)

## **Sheetal Madnani**

Consultant at Ramboll  
(424) 366-3621  
[smadnani@ramboll.com](mailto:smadnani@ramboll.com)

**RAMBOLL**

Bright ideas.  
Sustainable change.



City Boundary  
 Imperial County Boundary

### FACILITIES WITH ICAPCD PERMITS

### FIGURE 01

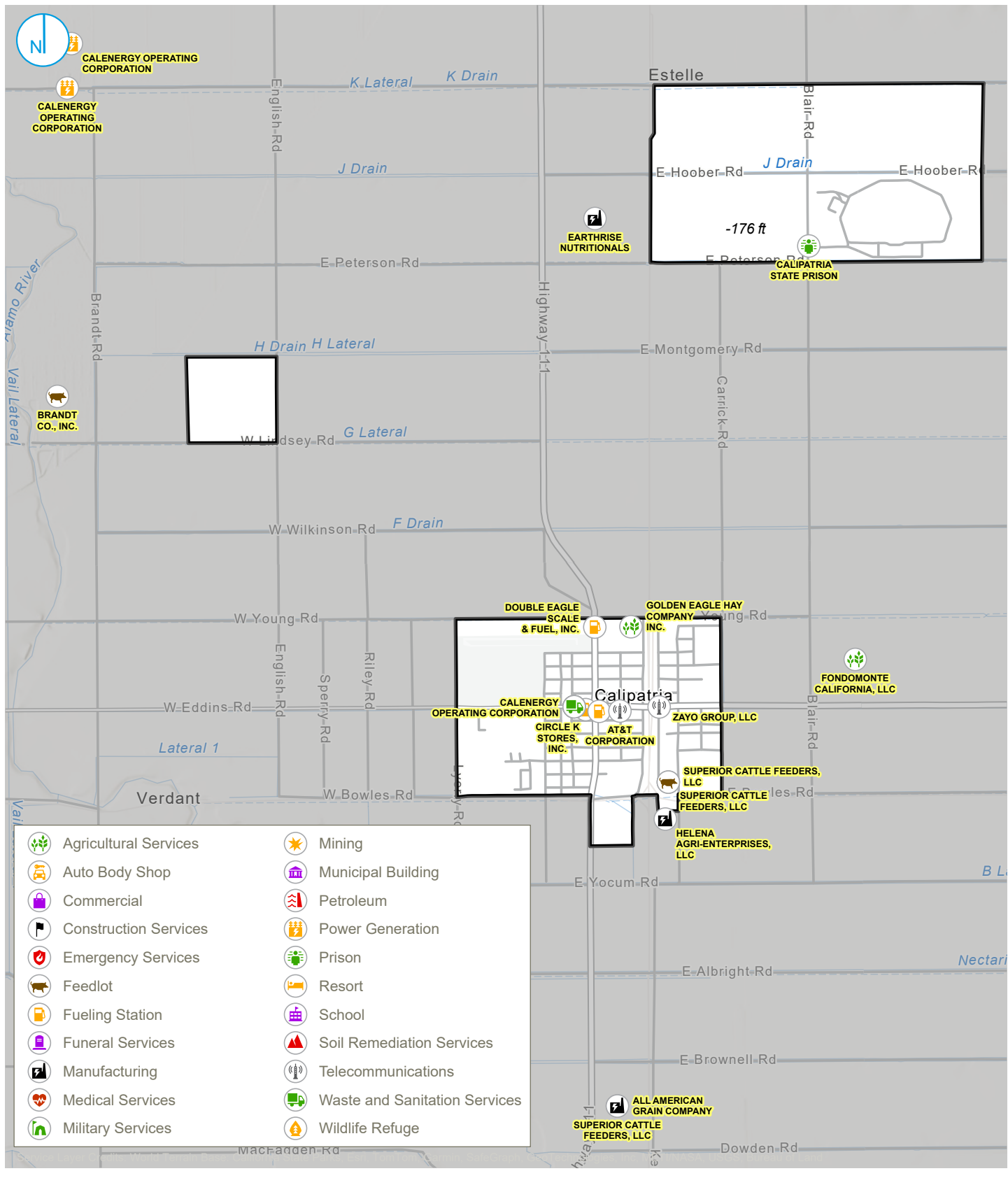
0 2 4 Miles

Imperial County  
AB 617 CERP

RAMBOLL AMERICAS  
ENGINEERING SOLUTIONS, INC.  
A RAMBOLL COMPANY



C:\Users\CWILLIAMS\FREIER\RAMBOLL\Melody Kneale - Projects\Imperial\03\_GIS\20240306\_PermittedFacilities - Calipatria\Figure 02A - Permitted Facilities.aprx



- |  |                       |  |                               |
|--|-----------------------|--|-------------------------------|
|  | Agricultural Services |  | Mining                        |
|  | Auto Body Shop        |  | Municipal Building            |
|  | Commercial            |  | Petroleum                     |
|  | Construction Services |  | Power Generation              |
|  | Emergency Services    |  | Prison                        |
|  | Feedlot               |  | Resort                        |
|  | Fueling Station       |  | School                        |
|  | Funeral Services      |  | Soil Remediation Services     |
|  | Manufacturing         |  | Telecommunications            |
|  | Medical Services      |  | Waste and Sanitation Services |
|  | Military Services     |  | Wildlife Refuge               |

City Boundary

## FACILITIES WITH ICAPCD PERMITS CALIPATRIA

FIGURE 02A

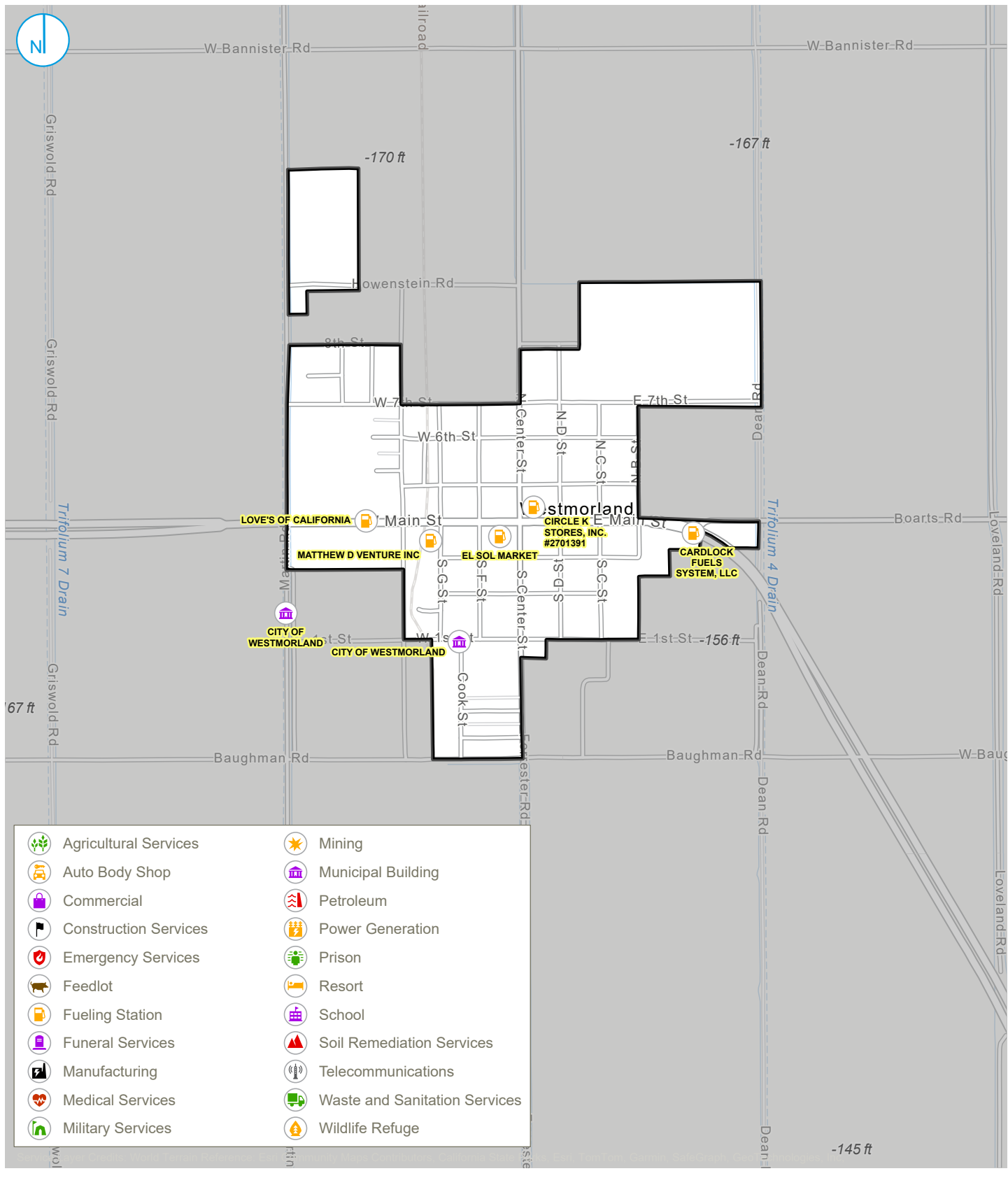
RAMBOLL AMERICAS  
ENGINEERING SOLUTIONS, INC.  
A RAMBOLL COMPANY

0 2,000 4,000 Feet

Imperial County  
AB 617 CERP



C:\Users\CWILLIAMS\FREIER\ Ramboll\Melody Kneale - Projects\Imperial\03\_GIS\20240306\_PermittedFacilities\20240306\_PermittedFacilities.aprx\Figure 02B - Permitted Facilities - Westmorland



- |  |                       |  |                               |
|--|-----------------------|--|-------------------------------|
|  | Agricultural Services |  | Mining                        |
|  | Auto Body Shop        |  | Municipal Building            |
|  | Commercial            |  | Petroleum                     |
|  | Construction Services |  | Power Generation              |
|  | Emergency Services    |  | Prison                        |
|  | Feedlot               |  | Resort                        |
|  | Fueling Station       |  | School                        |
|  | Funeral Services      |  | Soil Remediation Services     |
|  | Manufacturing         |  | Telecommunications            |
|  | Medical Services      |  | Waste and Sanitation Services |
|  | Military Services     |  | Wildlife Refuge               |

City Boundary

### FACILITIES WITH ICAPCD PERMITS WESTMORLAND

FIGURE 02B

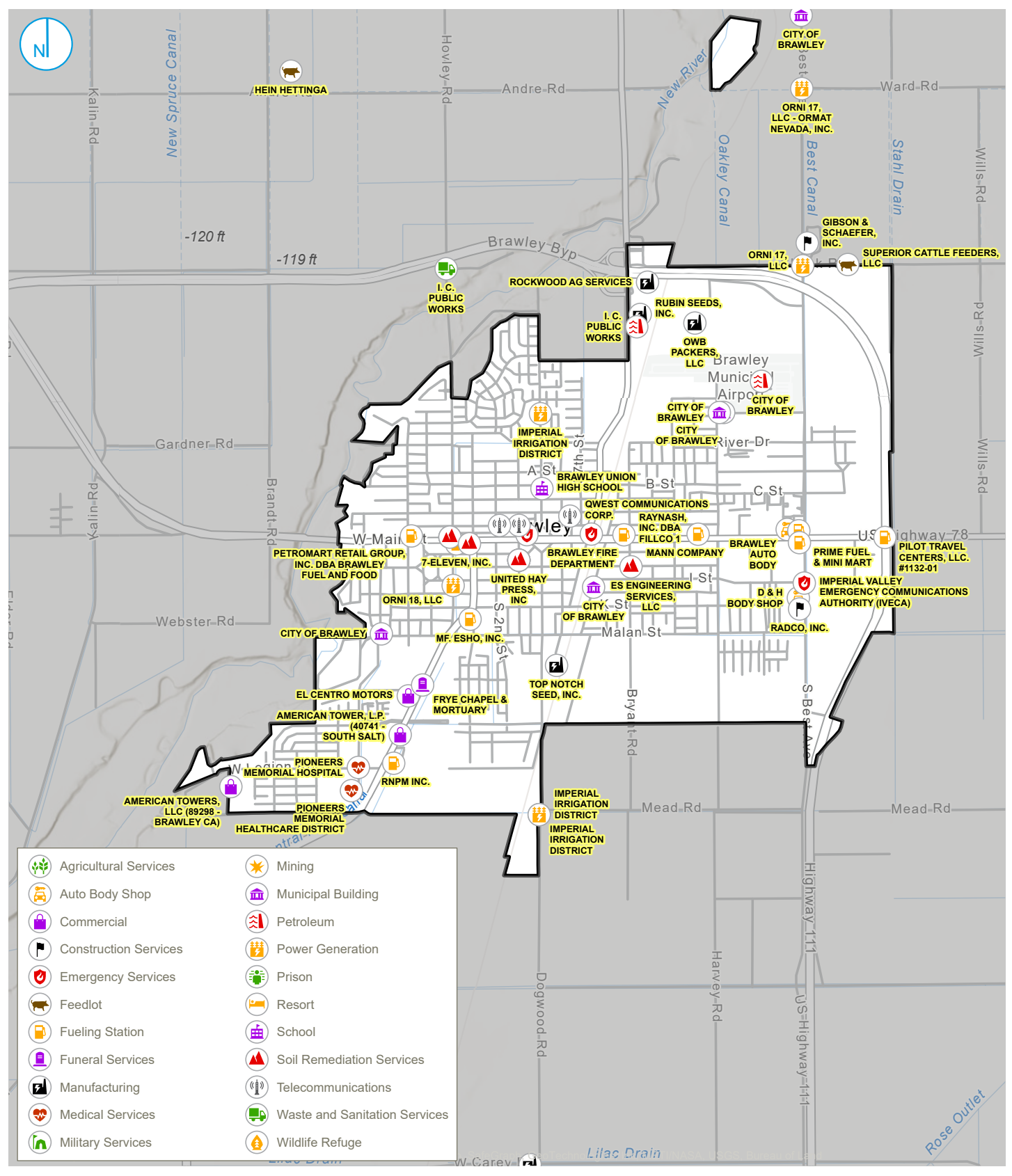
RAMBOLL AMERICAS ENGINEERING SOLUTIONS, INC. A RAMBOLL COMPANY



Imperial County AB 617 CERP



C:\Users\CWILLIAMS\FREIER\Ramboll\Melody Kneale - Projects\Imperial\03\_GIS\20240306\_PermittedFacilities\20240306\_PermittedFacilities.aprx\Figure 02C - Permitted Facilities - Brawley



City Boundary

## FACILITIES WITH ICAPCD PERMITS BRAWLEY

FIGURE 02C

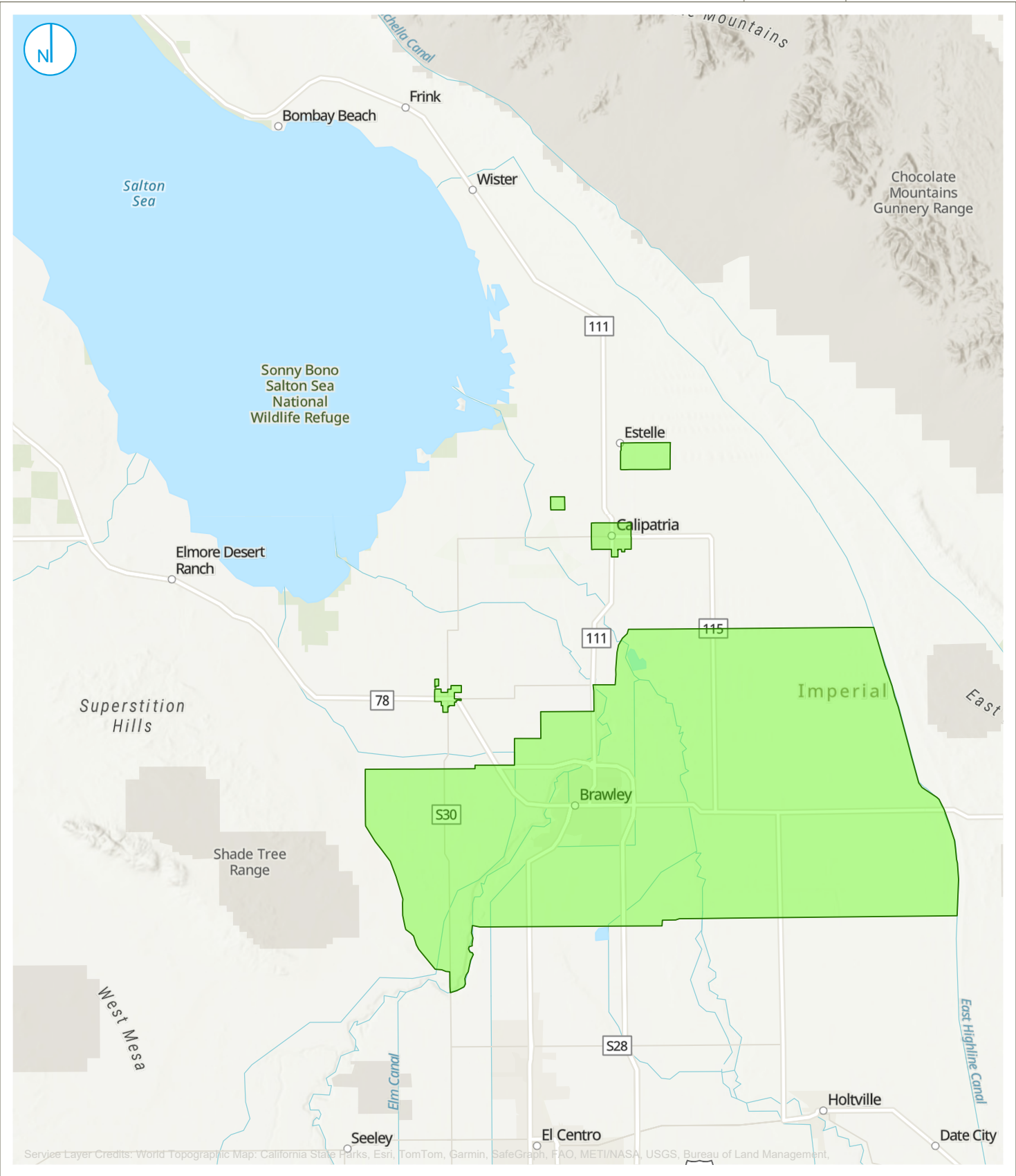
RAMBOLL AMERICAS  
ENGINEERING SOLUTIONS, INC.  
A RAMBOLL COMPANY

0 2,000 4,000 Feet

Imperial County  
AB 617 CERP



C:\Users\CWILLIAMS\FREIER\Ramboll\Melody Kneale - Projects\Imperial\03\_GIS\20240306\_PermittedFacilities\20240306\_PermittedFacilities.aprx\Figure 03A - Boundary Alternative 1 - CARB



Service Layer Credits: World Topographic Map: California State Parks, Esri, TomTom, Garmin, SafeGraph, FAO, METI/NASA, USGS, Bureau of Land Management.

Boundary Alternative 1 (CARB Boundaries)

### BOUNDARY ALTERNATIVE 1 FOR NORTH END COMMUNITY CARB BOUNDARIES

**FIGURE 03A**

RAMBOLL AMERICAS  
ENGINEERING SOLUTIONS, INC.  
A RAMBOLL COMPANY

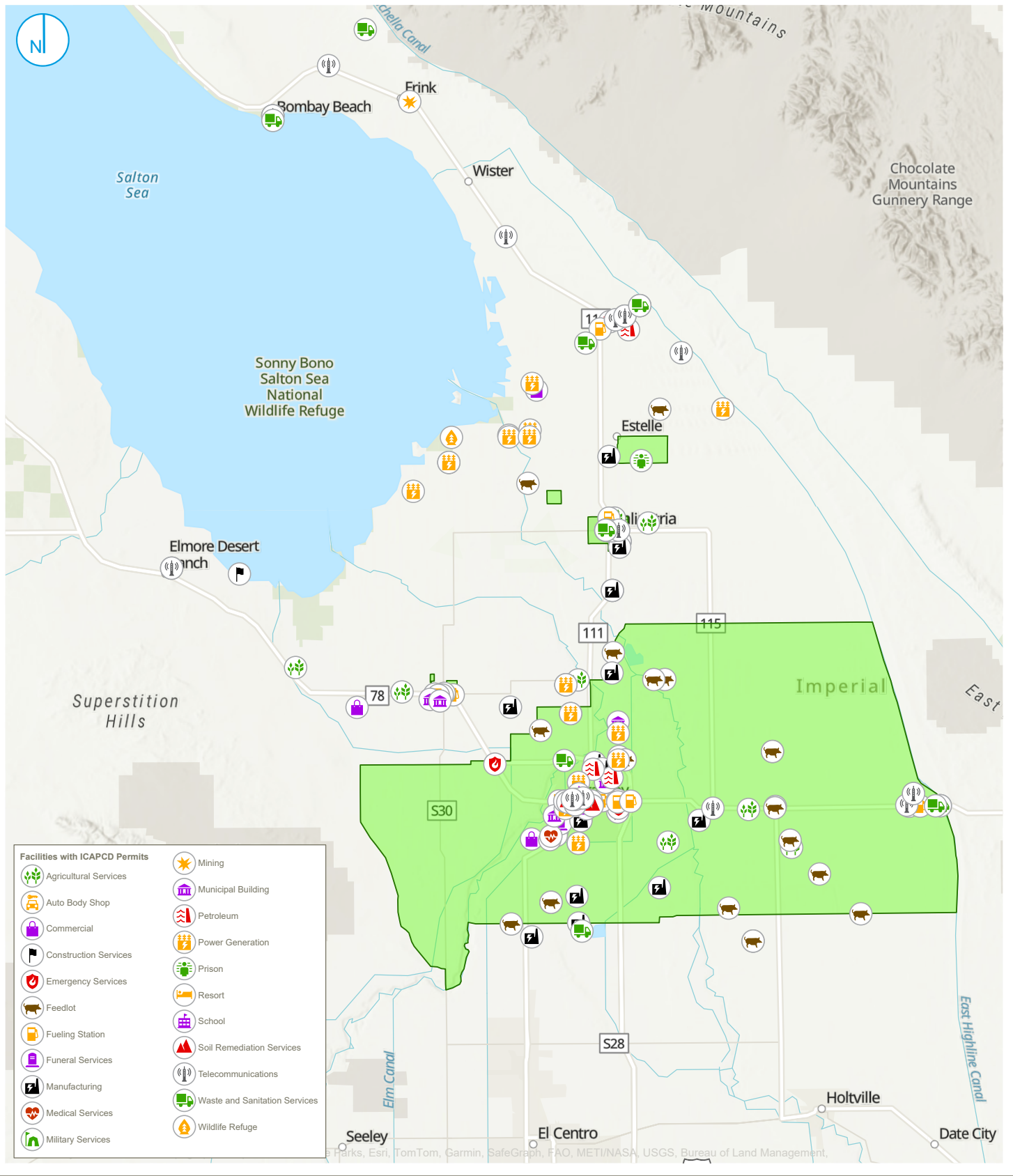


Imperial County  
AB 617 CERP





C:\Users\CWILLIAMS\FREIER\Ramboll\Melody Kneale - Projects\Imperial\03\_GIS\20240306\_PermittedFacilities\20240306\_PermittedFacilities.aprx\Figure 03A - Boundary Alternative 1 - CARB



Boundary Alternative 1 (CARB Boundaries)

## BOUNDARY ALTERNATIVE 1 FOR NORTH END COMMUNITY CARB BOUNDARIES

**FIGURE 03A**

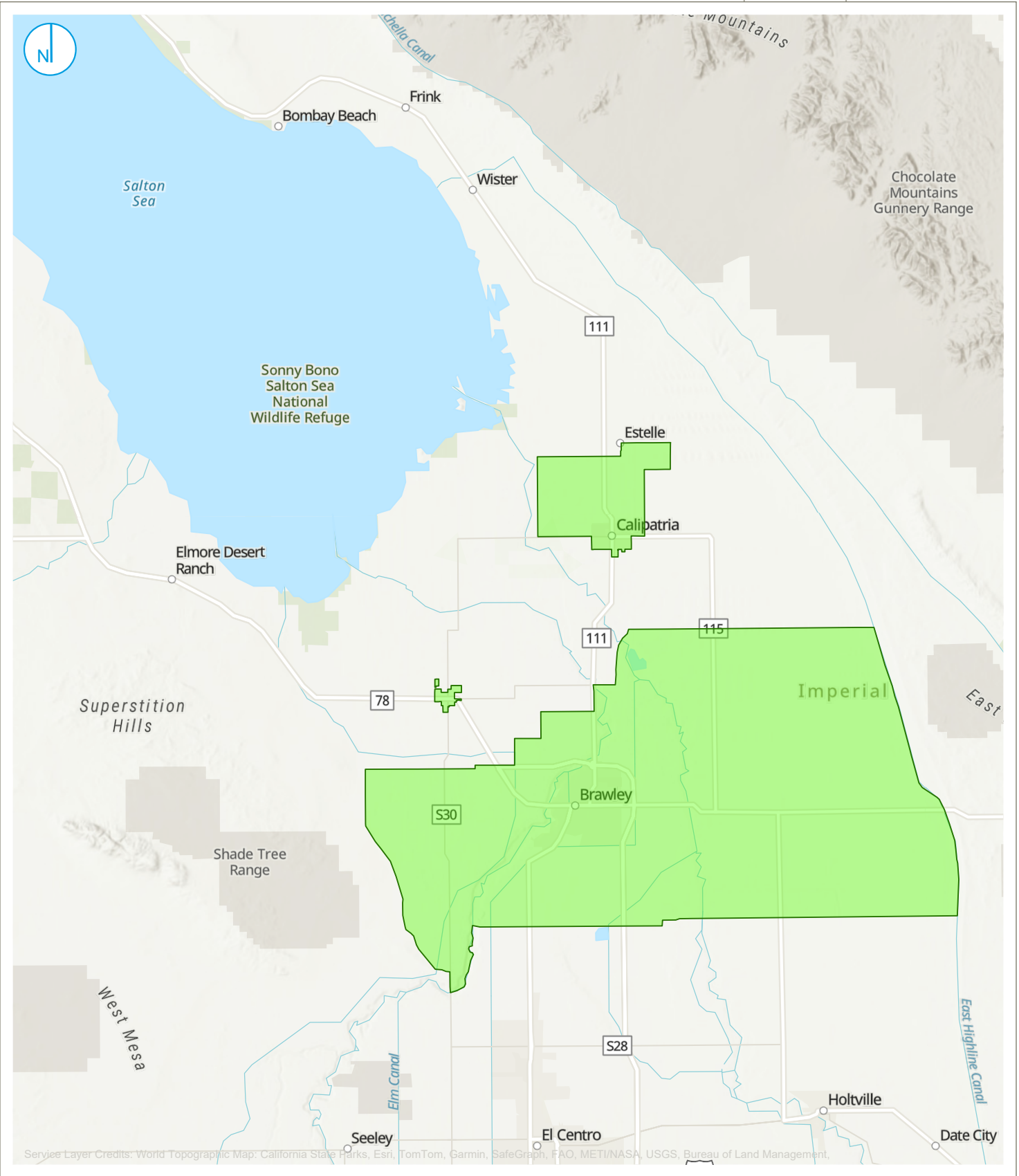
RAMBOLL AMERICAS  
ENGINEERING SOLUTIONS, INC.  
A RAMBOLL COMPANY



**Imperial County**  
AB 617 CERP



C:\Users\CWILLIAMS\FREIER\Ramboll\Melody Kneale - Projects\Imperial\03\_GIS\20240306\_PermittedFacilities\20240306\_PermittedFacilities.aprx\Figure 03B - Boundary Alternative 2 - CARB with Calipatria



Boundary Alternative 2 (CARB  
 Boundaries with Connected Calipatria  
 Segments)

## BOUNDARY ALTERNATIVE 2 FOR NORTH END COMMUNITY CARB BOUNDARIES WITH CONNECTED CALIPATRIA SEGMENTS

**FIGURE 03B**

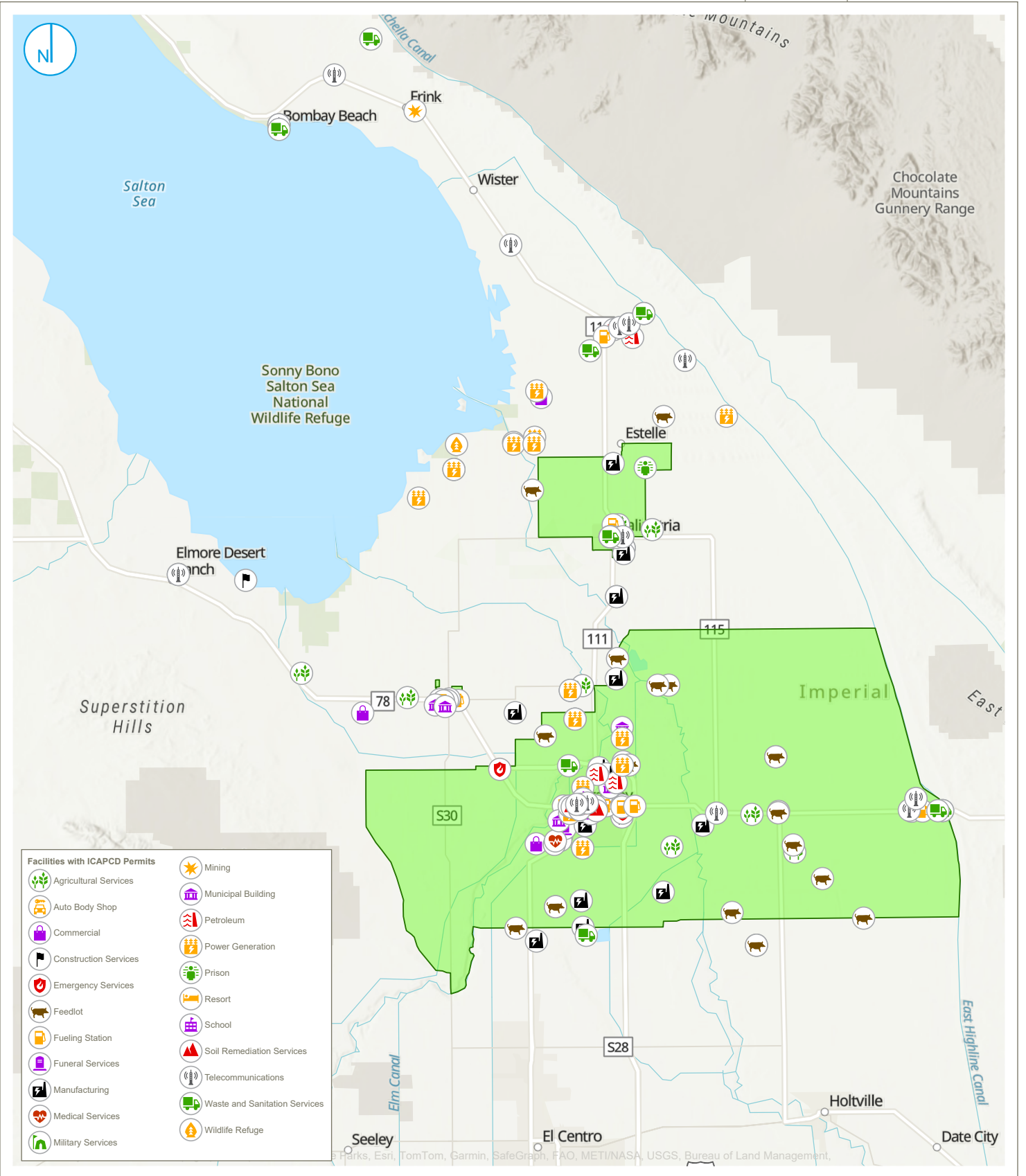
RAMBOLL AMERICAS  
ENGINEERING SOLUTIONS, INC.  
A RAMBOLL COMPANY



**Imperial County**  
AB 617 CERP



C:\Users\CWILLIAMS\FREIER\ Ramboll\Melody Kneale - Projects\Imperial\03\_GIS\20240306\_PermittedFacilities\20240306\_PermittedFacilities.aprx\Figure 03B - Boundary Alternative 2 - CARB with Calipatria



## BOUNDARY ALTERNATIVE 2 FOR NORTH END COMMUNITY CARB BOUNDARIES WITH CONNECTED CALIPATRIA SEGMENTS

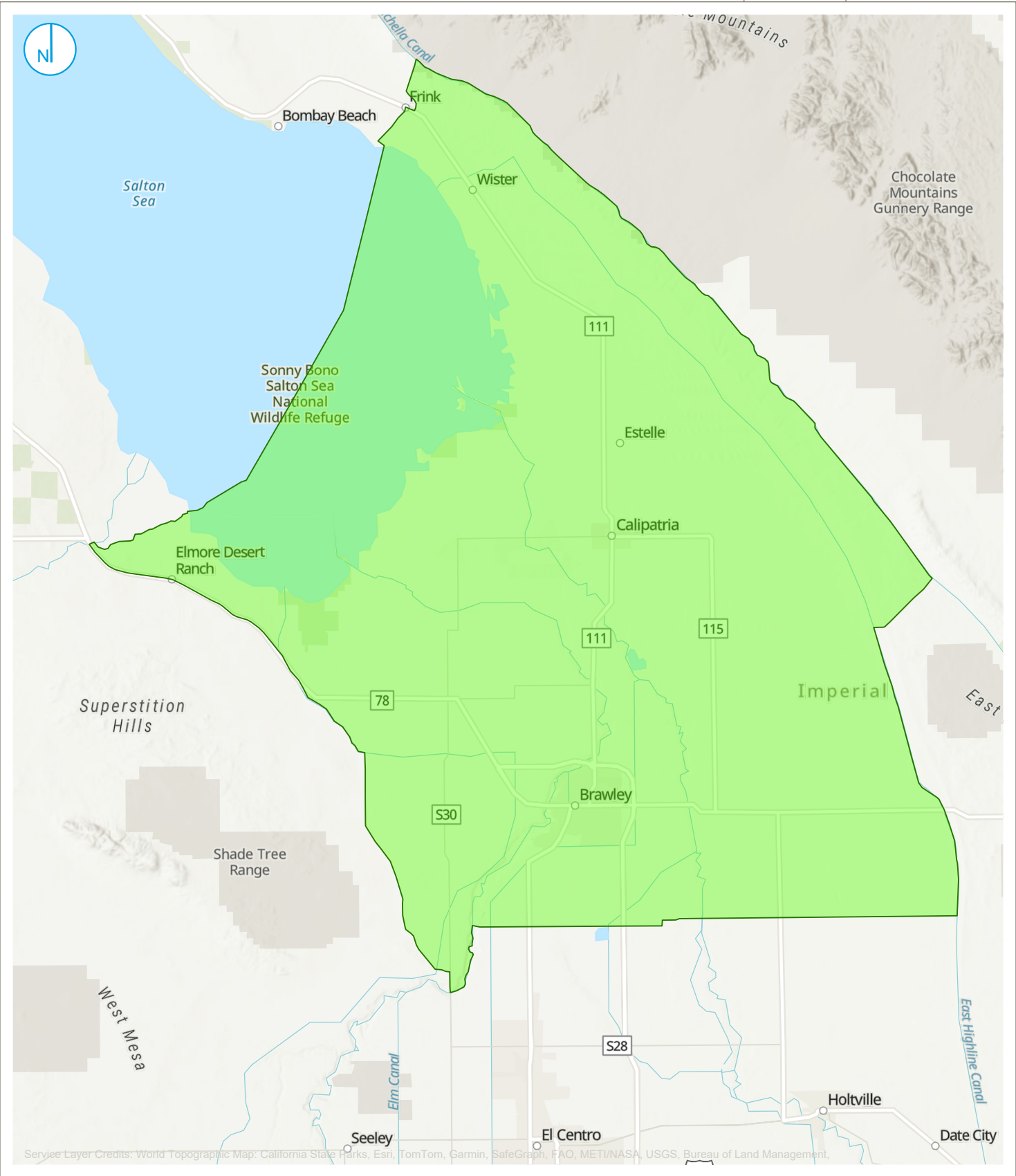
**FIGURE 03B**

RAMBOLL AMERICAS  
ENGINEERING SOLUTIONS, INC.  
A RAMBOLL COMPANY

**Imperial County**  
AB 617 CERP



C:\Users\CWILLIAMS\FREIER\Ramboll\Melody Kneale - Projects\Imperial\03\_GIS\20240306\_PermittedFacilities\20240306\_PermittedFacilities.aprx\Figure 03C - Boundary Alternative 3 - All Census Tracts



Boundary Alternative 3 (All Census Tracts)

### BOUNDARY ALTERNATIVE 3 FOR NORTH END COMMUNITY ALL CENSUS TRACTS

FIGURE 03C

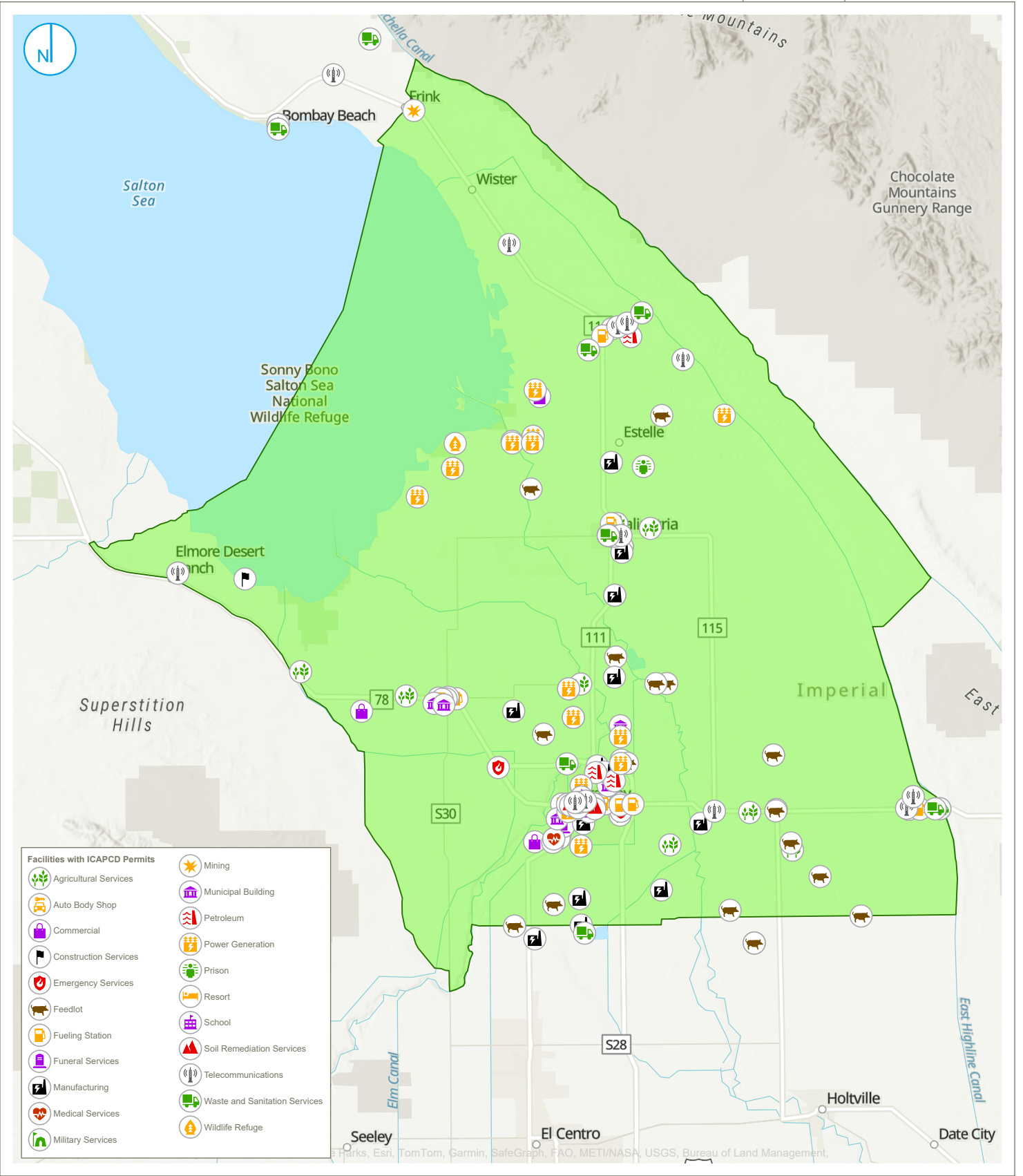
RAMBOLL AMERICAS ENGINEERING SOLUTIONS, INC. A RAMBOLL COMPANY



Imperial County AB 617 CERP



C:\Users\CWILLIAMS\FREIER\Ramboll\Melody Kneale - Projects\Imperial\03\_GIS\20240306\_PermittedFacilities\20240306\_PermittedFacilities.aprx\Figure 03C - Boundary Alternative 3 - All Census Tracts



**Facilities with ICAPCD Permits**


Boundary Alternative 3 (All Census Tracts)

## BOUNDARY ALTERNATIVE 3 FOR NORTH END COMMUNITY ALL CENSUS TRACTS

**FIGURE 03C**

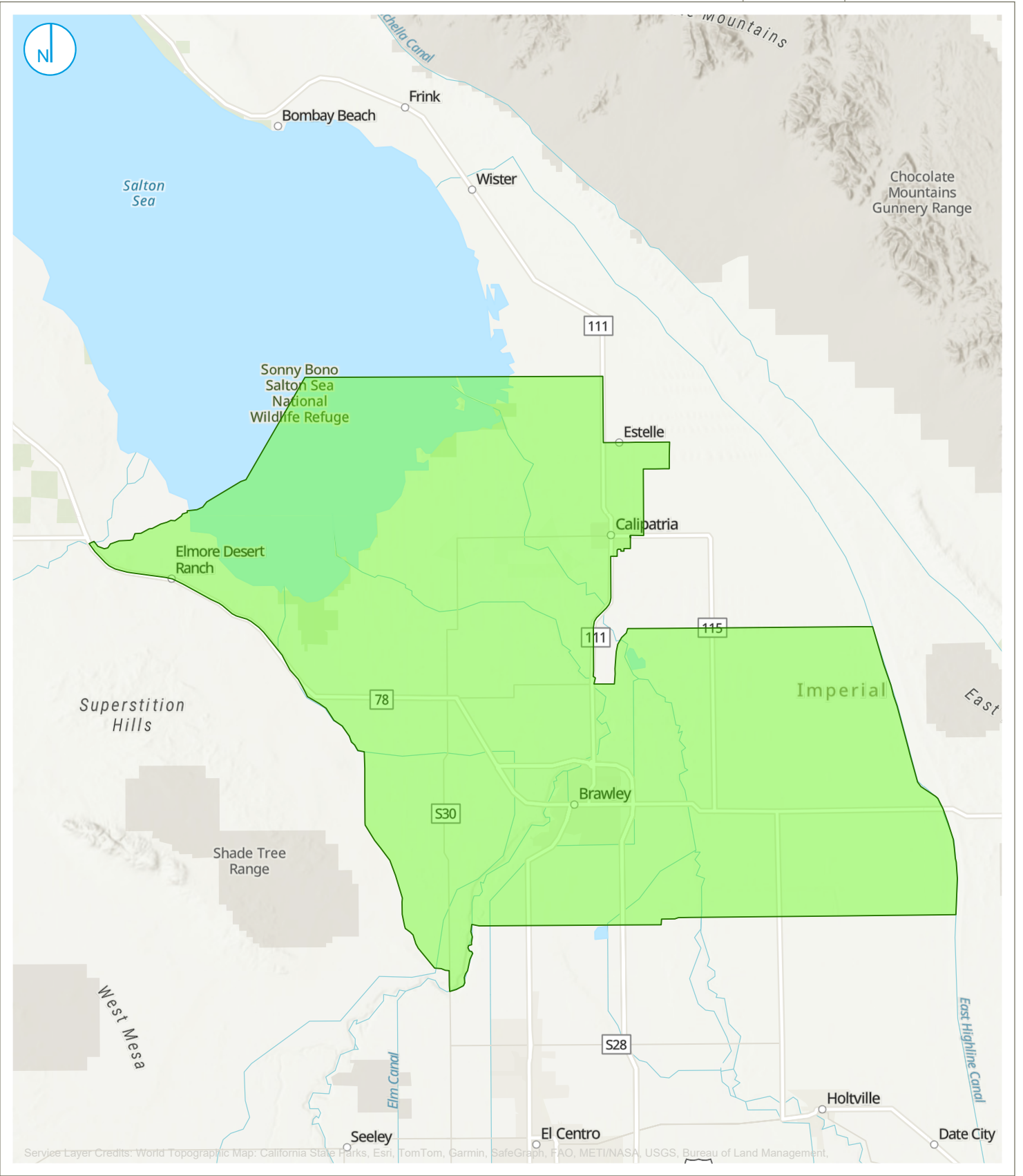
RAMBOLL AMERICAS  
ENGINEERING SOLUTIONS, INC.  
A RAMBOLL COMPANY



**Imperial County**  
AB 617 CERP



C:\Users\CWILLIAMS\FREIER\Ramboll\Melody Kneale - Projects\Imperial\03\_GIS\20240306\_PermittedFacilities\20240306\_PermittedFacilities.aprx\Figure 03D - Boundary Alternative 4 - Limited Census Tracts



Boundary Alternative 4 (Limited Census Tracts)

### BOUNDARY ALTERNATIVE 4 FOR NORTH END COMMUNITY LIMITED CENSUS TRACTS

FIGURE 03D

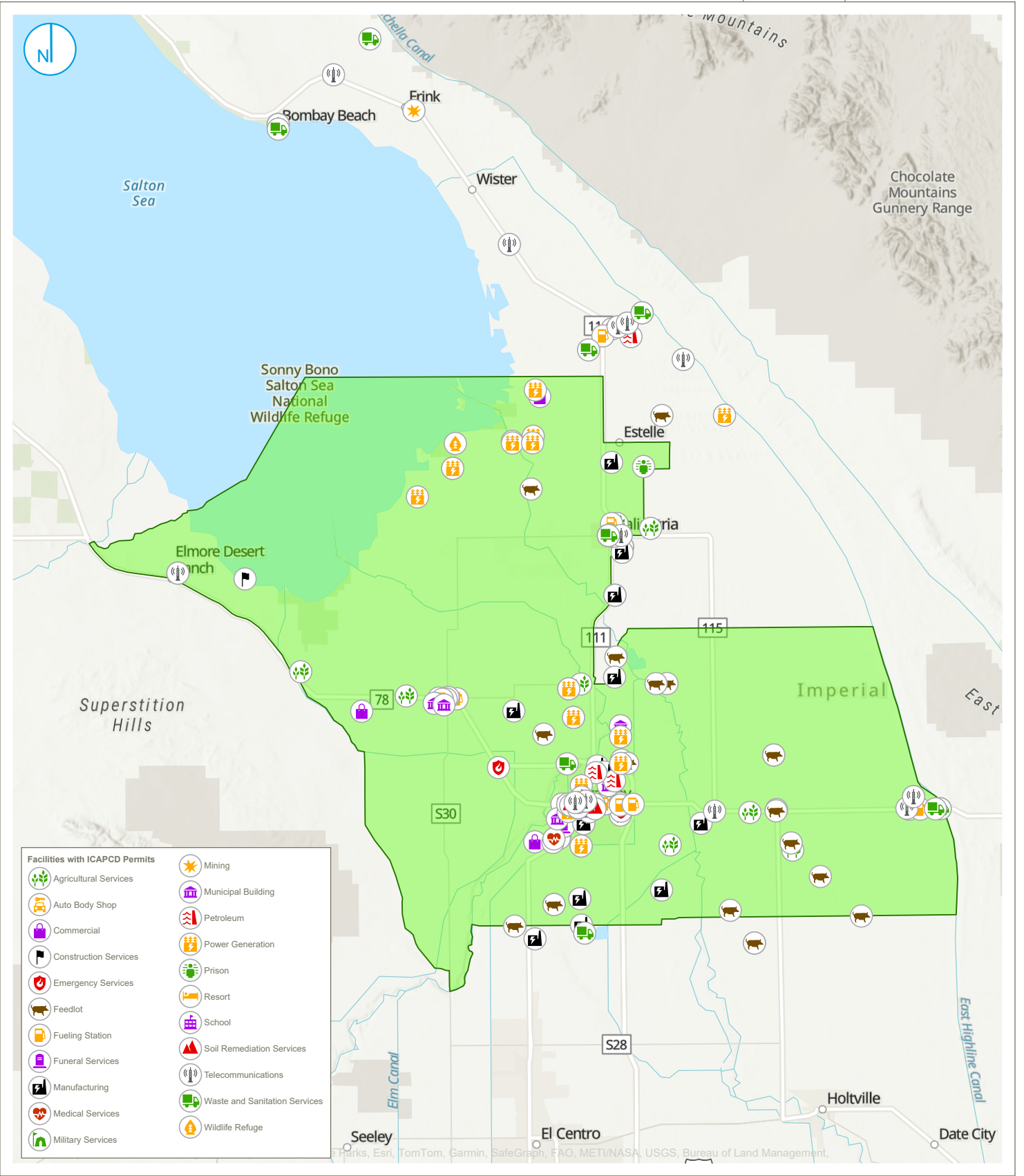
RAMBOLL AMERICAS ENGINEERING SOLUTIONS, INC. A RAMBOLL COMPANY

0 2.5 5 Miles

Imperial County AB 617 CERP



C:\Users\CWILLIAMS\FREIER\Ramboll\Melody Kneale - Projects\Imperial\03\_GIS\20240306\_PermittedFacilities\20240306\_PermittedFacilities.aprx\Figure 03D - Boundary Alternative 4 - Limited Census Tracts



Facilities with ICAPCD Permits	

Boundary Alternative 4 (Limited Census Tracts)

## BOUNDARY ALTERNATIVE 4 FOR NORTH END COMMUNITY LIMITED CENSUS TRACTS

**FIGURE 03D**

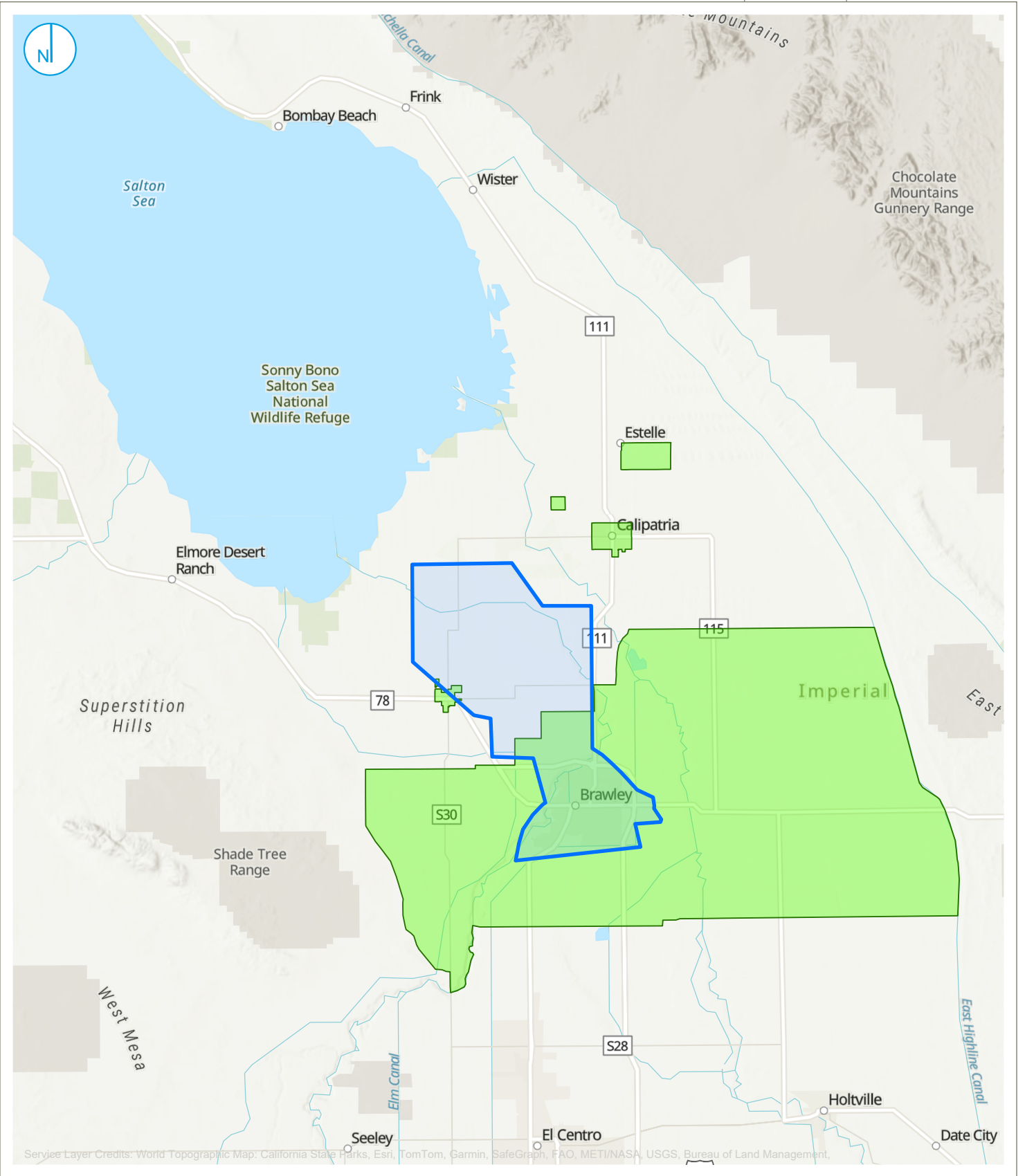
RAMBOLL AMERICAS  
ENGINEERING SOLUTIONS, INC.  
A RAMBOLL COMPANY



**Imperial County**  
AB 617 CERP



C:\Users\CWILLIAMS\FREIER\Ramboll\Melody Kneale - Projects\Imperial\03\_GIS\20240306\_PermittedFacilities\20240306\_PermittedFacilities.aprx\Figure 04 - Calexico-El Centro-Heber Corridor and North End Community Boundaries



Service Layer Credits: World Topographic Map: California State Parks, Esri, TomTom, Garmin, SafeGraph, FAO, METI/NASA, USGS, Bureau of Land Management.

- Boundary Alternative 1 (CARB Boundaries)
- Calexico-El Centro-Heber Corridor Community Boundary

## CALEXICO-EL CENTRO-HEBER CORRIDOR AND NORTH END COMMUNITY BOUNDARIES FOR COMPARISON

**FIGURE 04**

RAMBOLL AMERICAS  
ENGINEERING SOLUTIONS, INC.  
A RAMBOLL COMPANY



**Imperial County**  
AB 617 CERP

